

# TASMANIAN STATISTICAL INDICATORS

EMBARGO: 11:30AM (CANBERRA TIME) FRI 10 JAN 2003

## CONTENTS

|   | <i>page</i> |
|---|-------------|
| Notes .....   | 2           |
| Main features .....   | 3           |
| List of tables .....  | 8           |
| <br>  |             |
| SUBJECT AREAS   |             |
| <b>1</b> Population and demography .....                    | 9           |
| <b>2</b> Labour force .....                                 | 10          |
| <b>3</b> Wages and prices .....                             | 18          |
| <b>4</b> Production .....                                   | 24          |
| <b>5</b> Primary industry .....                             | 25          |
| <b>6</b> Building .....                                     | 28          |
| <b>7</b> Finance .....                                      | 29          |
| <b>8</b> Tourism .....                                      | 31          |
| <b>9</b> Transport .....                                    | 34          |
| <b>10</b> Retail trade .....                                | 35          |
| <b>11</b> Overseas trade .....                              | 36          |
| <b>12</b> Australia and state comparisons .....             | 39          |
| <b>13</b> Tasmanian statistical divisions comparisons ..... | 41          |
| <br>  |             |
| ADDITIONAL INFORMATION                                      |             |
| Map: Tasmanian statistical divisions .....                  | 43          |

- For further information about these and related statistics, contact the National Information and Referral Service on 1300 135 070 or Mary Eagle on Hobart 03 6222 5812.

## NOTES

### FORTHCOMING ISSUES

| ISSUE         | RELEASE DATE     |
|---------------|------------------|
| February 2003 | 10 February 2003 |
| March 2003    | 10 March 2003    |
| April 2003    | 10 April 2003    |
| May 2003      | 9 May 2003       |
| June 2003     | 11 June 2003     |

### INTRODUCTION

1 This publication contains latest figures for a comprehensive range of economic indicators. Statistics shown in this publication are the latest available at the date of preparation and may be subject to revision in subsequent issues. Reference should therefore always be made to the latest issue or to the statistical publication on the specific subject.

### SEASONAL ADJUSTMENT AND TREND ESTIMATION

2 Seasonal adjustment is a means of removing the estimated effects of normal seasonal variation from the series so that the effects of other influences on the series can be more clearly recognised. Seasonal adjustment does not aim to remove the irregular or non-seasonal influences which may be present in any particular month. This means that month-to-month movements of the seasonally adjusted estimates may not be reliable indicators of trend behaviour.

3 The smoothing of seasonally adjusted series reduces the impact of the irregular components of the seasonally adjusted series and creates trend estimates. These trend estimates are derived by applying a 13-term Henderson-weighted moving average to all months except the last six. The last six monthly trend estimates are obtained by applying surrogates of the Henderson average to the seasonally adjusted series.

4 While this smoothing technique enables estimates to be produced for the latest month, it does result in revisions to the most recent months as additional observations become available. Generally, subsequent revisions become smaller and after 3 months have a negligible impact on the series.

5 A number of ABS data series will reflect significant and subsequent impacts of The New Tax System (TNTS), introduced in Australia from 1 July 2000. Further information can be found in *Information Paper: ABS Statistics and The New Tax System* (cat.no.1358.0).

### SYMBOLS AND OTHER USAGES

|        |  |
|--------|--|
| \$m    | million dollars  |
| n.a.   | not available  |
| n.p.   | not available for separate publication<br>(but included in totals where applicable)                      |
| n.y.a. | not yet available  |
| . .    | not applicable   |
| —      | nil or rounded to zero (including null cells)  |
| p      | preliminary — figure or series subject to revision   |
| r      | figure or series revised since previous issue  |
| *      | estimate has a relative standard error of between 25% and 50% and should be used with caution            |
| **     | estimate has a relative standard error greater than 50% and is considered too unreliable for general use |

Stevan R. Matheson  
Regional Director, Tasmania

## MAIN FEATURES

### THE LABOUR FORCE

Trend estimates There were an estimated 217,100 persons (based on *trend* estimates) in the labour force in November 2002 and an estimated 374,900 civilian Tasmanians aged 15 years or more, yielding a labour force participation rate of 57.9%, compared to 58.7% in November 2001. The Australian labour force participation rate for November 2002 was 63.6%, a decrease from the November 2001 estimate of 63.7% (see table 36 and *Labour Force, Australia, Preliminary* (cat. no. 6202.0)).

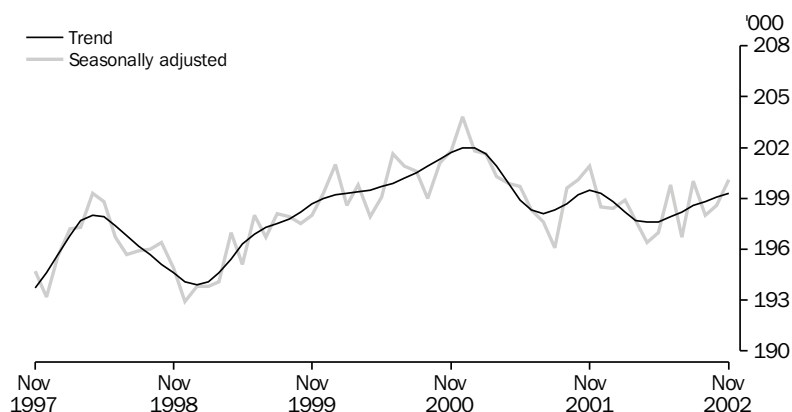
For Tasmanian males, the *trend* estimate of the participation rate was 66.6% in November 2002 compared to 67.5% in November 2001. For Tasmanian females, the *trend* estimate of the participation rate was 49.7% in November 2002, compared to 50.4% in November 2001 (see table 3).

### EMPLOYMENT

#### State comparisons

*Trend estimates* The *trend* estimate of the total number of employed persons in Tasmania in November 2002 was 199,300, compared to 199,500 in November 2001, a decrease of 0.1%. Employment over the same period increased in New South Wales by 1.9%, Victoria by 1.9%, Queensland by 3.1%, South Australia by 2.2% and Western Australia by 2.1%. The increase in the national employment figure over the same period was 2.1% (see table 36 and *Labour Force, Australia, Preliminary* (cat. no. 6202.0)).

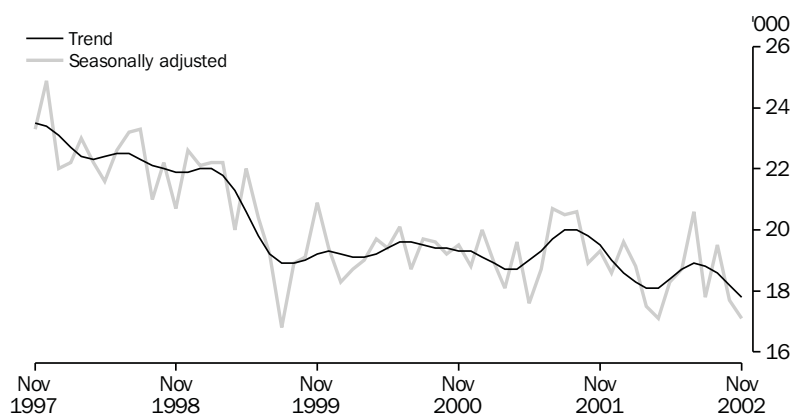
#### EMPLOYMENT, TASMANIA



### UNEMPLOYMENT

Trend estimates The *trend* estimate of the number of unemployed persons in Tasmania for November 2002 was 17,800, compared to 19,500 in November 2001. The *trend* estimate of the unemployment rate for November 2002 was 8.2% compared to 8.9% in November 2001. The Australian *trend* estimate of the unemployment rate was 6.1% in November 2002 compared to 6.9% in November 2001 (see table 3 and 36, and *Labour Force, Australia, Preliminary* (cat. no. 6202.0)).

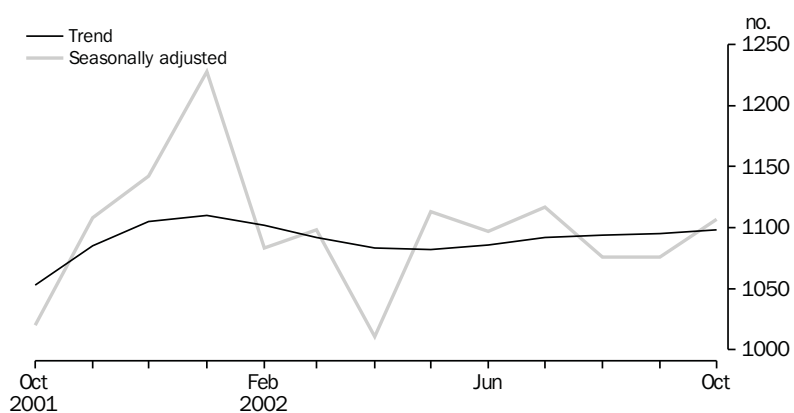
### UNEMPLOYMENT, TASMANIA



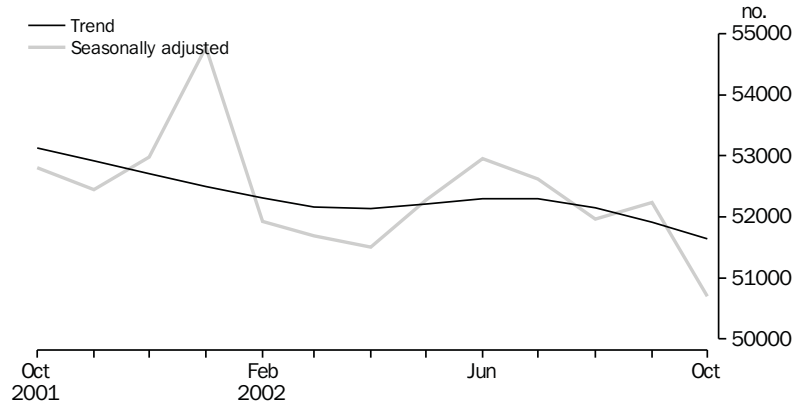
### HOUSING FINANCE

Trend estimates    The latest *trend* series for the number of housing finance commitments shows a 0.3% increase in Tasmania between September and October 2002, and a 0.5% decrease for Australia. The Tasmanian *trend* series shows an increase of 4.3% between October 2001 and October 2002, while the national *trend* series showed a decrease of 2.8%. The only other state/territory to show an increase (8.8%), between October 2001 and October 2002, was the Australian Capital Territory .

### HOUSING FINANCE, TASMANIA, Number of dwellings



HOUSING FINANCE AUSTRALIA, Number of dwellings



The latest *trend* series for the total value of commitments for Tasmania shows an increase of 1.5% between September and October 2002 and an increase of 13.1% from October 2001 to October 2002. The national *trend* series shows the total value of commitments having increased by 0.6% between September 2002 and October 2002 with an increase of 6.5% between October 2001 and October 2002 (see table 28 and *Housing Finance for Owner Occupation, Australia* (cat. no. 5609.0)). The only state/territory to show a decrease (28.6%), between October 2001 and October 2002 was the Northern Territory.

## GOVERNMENT FINANCIAL ESTIMATES

*Government Financial Estimates, Tasmania, Electronic Delivery* (cat no. 5501.6.55.001) released 9 August, features forward estimates for 2002–03, estimated outcomes for 2001–02, and final data for 2000–01 back to 1998–99, for the Tasmanian State General Government sector, Public Non Financial Corporations and the consolidated Non-Financial Public Sector.

The introduction of the GST, by the Commonwealth Government on 1 July 2000, has seen the elimination of a number of state taxes and in particular the petroleum, liquor and tobacco franchise taxes from July 1 2000. The decrease in state taxes was accompanied by increases in commonwealth grants under the arrangements agreed to by the states and the commonwealth. The abolition of Financial Institutions Duty and the Electricity Levy from 1 July 2001 further reduced state taxes for 2001–02. Collections from duty on conveyances peaked in the year ended 30 June 2002 because of the impact of the Commonwealth Government's grants for First Home Owners. Along with the abolition or reduction in other state taxes, the drop-off in the expected duties on conveyances resulted in State tax collections expected to be lower again in 2002–03.

Expenditure on new fixed assets by Public Non-Financial Corporations in the year ended 30 June 2002, increased dramatically due to the acquisition of the two new Bass Strait ferries at a total cost of \$290m. Increased spending on electricity infrastructure also contributed to the high figure. Capital expenditure for 2002–03 is expected to return to more normal levels.

## BANKING STATISTICS

The Banking Statistics shown in table 30 of issues of this bulletin prior to September 2002 are no longer available, and the table has been discontinued. The data were provided by the Australian Prudential Regulation Authority (APRA). APRA implemented a new data collection for April 2002 and as yet has not decided on what data will be released in future.

## BUILDING APPROVALS

Original terms There were 173 dwelling units approved during October 2002, including 152 new houses. This compares to 178 dwelling units approved during September 2002, including 172 new houses. The number of dwelling units approved increased from the 170 approvals recorded in October 2001.

At current prices, the value of total building was \$35.3m in October 2002, which was 0.6% above the September 2002 figure of \$35.1m and 31.3% below the October 2001 figure of \$51.4m. Residential building contributed \$25.0m and non-residential building \$10.3m in October 2002 (see table 25 and *Building Approvals, Australia* (cat. no. 8731.0)).

## SALES OF NEW MOTOR VEHICLES

In *trend* terms, the number of new motor vehicles sold decreased from 1,223 in September 2002 to 1,211 in October 2002. In *trend* terms, the number of new motor vehicles sold decreased marginally by 0.2% from the October 2001 figure of 1,214. Passenger vehicles represented 56.6% of all new vehicles registered in Tasmania in October 2002. Nationally, the *trend* estimate of new motor vehicles sold in October 2002 was 70,739, an increase of 6.8% from the October 2001 figure of 66,216.

These statistics replace the New Motor Vehicle Registrations collection. They are based on the VFACTS series produced by the Federal Chamber of Automotive Industries. VFACTS reports the numbers of new motor vehicle sales by dealers and direct sales by manufacturers throughout Australia (see table 31 and *Sales of New Motor Vehicles, Australia (Electronic Publication)* (cat. no. 9314.0)).

## RETAIL

Trend estimates In *trend* terms, the estimate of retail turnover in Australia for October 2002 was \$14,380.7m, a 6.8% increase from the October 2001 estimate of \$13,480.8m. In *trend* terms, the estimate of retail turnover in Tasmania for October 2002 was \$292.9m, 6.3% above the figure recorded in October 2001 (\$275.6m) (see table 32 and *Retail Trade, Australia* (cat. no. 8501.0)).

## CAPITAL EXPENDITURE

Original terms In original terms, the estimate of total capital expenditure at current prices for Australia in the September quarter 2002 was \$11,508m, a 4.7% decrease from the June quarter estimate of \$12,070m. In original terms, the estimate of total capital expenditure at current prices for Tasmania in the September quarter 2002 was \$200m, a 34.9% decrease from the June quarter estimate of \$307m.

Original terms *continued* For Tasmania, the estimate for expenditure on buildings and structures decreased by 36.2% and the estimate for expenditure on equipment, plant and machinery decreased by 33.7%. The estimates of expenditure by Mining, Manufacturing and Other selected industries each decreased in the September quarter.

#### LIVESTOCK SLAUGHTERING

Trend estimates In October 2002, the *trend* estimate for Tasmania for the number of cattle and calves slaughtered increased by 1.9% over the previous month. Over the same period, the *trend* estimate for both the number of sheep and lambs slaughtered and the number of pigs slaughtered decreased, down by 2.3% and 1.1%, respectively.

The *trend* estimate for the number of cattle and calves slaughtered in October 2002 was 18,400, up by 4.7% on the estimate for October 2001, but down by 1.8% on the estimate for October 2000.

The *trend* estimate for the number of sheep and lambs slaughtered in October 2002 was 64,100, down by 5.4% on the estimate for October 2001 and down by 6.0% on the estimate for October 2000.

The *trend* estimate for the number of pigs slaughtered was 3,930, a decrease of 20.4% on the estimate for October 2001 and a decrease of 16.8% on October 2000. (See table 21)

#### OVERSEAS TRADE

The value of Tasmania's exports for the month of October 2002 was \$176m, a decrease of 5% on the month of September 2002. Australia's exports for October 2002 totalled \$10,455m, an increase of 5% on the previous month.

Tasmania's major export destinations for the month of October 2002 were Japan (\$53.6m), Korea (\$19.6m) and the United States of America (\$14.3m). Major commodity groups exported for the month were non-ferrous metals (\$56.8m), fish, crustaceans and molluscs (\$10.3m) and metalliferous ores and scrap (\$5.8m).

#### CONSUMER PRICE INDEX

The Consumer Price Index (All groups) for Hobart increased by 0.4% in the September quarter of 2002. For the weighted average of the eight capital cities, the index rose 0.7% for the September quarter. The largest quarterly increases were shared by Adelaide and Perth (both 0.9%) while Hobart's increase was the second lowest.

## LIST OF TABLES

|           |   |    |
|-----------|---|----|
| <b>1</b>  | Population  | 9  |
| <b>2</b>  | Births, deaths and marriages  | 9  |
| <b>3</b>  | Labour force status   | 10 |
| <b>4</b>  | Labour force status by region, males  | 11 |
| <b>5</b>  | Labour force status by region, females                                      | 12 |
| <b>6</b>  | Labour force status by region, persons                                      | 13 |
| <b>7</b>  | Teenage labour market   | 14 |
| <b>8</b>  | All employed persons by occupation  | 15 |
| <b>9</b>  | Employed persons by industry  | 16 |
| <b>10</b> | Average hours worked  | 16 |
| <b>11</b> | Job vacancies   | 17 |
| <b>12</b> | Industrial disputes   | 17 |
| <b>13</b> | Average weekly earnings of employees  | 18 |
| <b>14</b> | Indexes of total hourly rates of pay  | 19 |
| <b>15</b> | Summary of annual movements in wages and prices                             | 20 |
| <b>16</b> | House price index numbers, Hobart   | 20 |
| <b>17</b> | Consumer price index, Hobart and eight capital cities combined              | 21 |
| <b>18</b> | Price index of materials used in building other than house building, Hobart | 22 |
| <b>19</b> | Production of selected commodities  | 24 |
| <b>20</b> | Livestock slaughtering: original  | 25 |
| <b>21</b> | Livestock slaughtering: seasonally adjusted and trend                       | 25 |
| <b>22</b> | Meat production   | 26 |
| <b>23</b> | Principal mineral concentrates produced                                     | 26 |
| <b>24</b> | Sawmills and plywood mills, logs delivered and timber produced              | 27 |
| <b>25</b> | Building approvals: original  | 28 |
| <b>26</b> | Secured housing commitments   | 29 |
| <b>27</b> | Private new capital expenditure by type of asset: original                  | 30 |
| <b>28</b> | Accommodation establishments  | 31 |
| <b>29</b> | National Parks, person entries  | 32 |
| <b>30</b> | Tracks in National Parks, walker registrations                              | 33 |
| <b>31</b> | Sales of new motor vehicles   | 34 |
| <b>32</b> | Turnover of retail establishments at current prices                         | 35 |
| <b>33</b> | Value of overseas trade—Tasmania and Australia                              | 36 |
| <b>34</b> | Merchandise exports by selected countries and country groups                | 37 |
| <b>35</b> | Merchandise exports by selected commodity groups: original                  | 38 |
| <b>36</b> | Major Statistical Indicators—Australia and state comparisons                | 39 |
| <b>37</b> | Major Statistical Indicators—Tasmanian Statistical Divisions                | 41 |



# 1

## POPULATION — ORIGINAL

|                  | Estimated resident population | Natural increase(a) | Net estimated migration gain | Total population growth | Annual growth rate(b) |
|------------------|-------------------------------|---------------------|------------------------------|-------------------------|-----------------------|
|                  | '000                          | '000                | '000                         | '000                    | %                     |
| <b>1999–2000</b> | 472.1                         | 2.1                 | -2.6                         | 0.1                     | 0.01                  |
| <b>2000–2001</b> | 472.9                         | 2.4                 | -2.4                         | 0.8                     | 0.18                  |
| <b>2001–2002</b> | 473.6                         | 2.1                 | -1.4                         | 0.7                     | 0.15                  |
| <b>2000</b>      |                               |                     |                              |                         |                       |
| June qtr         | 472.1                         | 0.5                 | -0.8                         | -0.2                    | 0.01                  |
| September qtr    | 472.1                         | 0.5                 | -0.7                         | —                       | -0.02                 |
| December qtr     | 472.3                         | 0.4                 | -0.4                         | 0.2                     | —                     |
| <b>2001</b>      |                               |                     |                              |                         |                       |
| March qtr        | 472.7                         | 0.8                 | -0.6                         | 0.4                     | 0.10                  |
| June qtr         | 472.9                         | 0.7                 | -0.7                         | 0.2                     | 0.18                  |
| September qtr    | 472.7                         | 0.2                 | -0.4                         | -0.2                    | 0.14                  |
| December qtr     | 473.3                         | 0.8                 | -0.3                         | 0.5                     | 0.20                  |
| <b>2002</b>      |                               |                     |                              |                         |                       |
| March qtr        | 473.5                         | 0.6                 | -0.4                         | 0.3                     | 0.17                  |
| June qtr p       | 473.6                         | 0.5                 | -0.4                         | 0.1                     | 0.15                  |

(a) Excess of live births registered over deaths registered (based on usual state of residence).

(b) Percentage growth from same quarter in previous year.

Source: Australian Demographic Statistics (cat. no. 3101.0).

# 2

## BIRTHS, DEATHS AND MARRIAGES(a)

|                  | Births |         | Deaths |         | Infant mortality(b) |         | Marriages |         |
|------------------|--------|---------|--------|---------|---------------------|---------|-----------|---------|
|                  | no.    | rate(c) | no.    | rate(d) | no.                 | rate(e) | no.       | rate(f) |
| <b>1999–2000</b> | 5 804  | 1.82    | 3 715  | 6.2     | 38                  | 6.6     | 2 648     | 5.6     |
| <b>2000–01</b>   | 6 263  | 2.00    | 3 895  | 6.3     | 32                  | 5.1     | 2 446     | 5.2     |
| <b>2001–02</b>   | 5 975  | 1.93    | 3 836  | 6.0     | 34                  | 5.7     | 2 432     | 5.1     |
| <b>2000</b>      |        |         |        |         |                     |         |           |         |
| June qtr         | 1 407  | ..      | 917    | ..      | 9                   | 6.4     | 733       | ..      |
| September qtr    | 1 405  | ..      | 954    | ..      | 6                   | 4.3     | 364       | ..      |
| December qtr     | 1 376  | ..      | 1 012  | ..      | 8                   | 5.8     | 582       | ..      |
| <b>2001</b>      |        |         |        |         |                     |         |           |         |
| March qtr        | 1 775  | ..      | 968    | ..      | 9                   | 5.1     | 789       | ..      |
| June qtr         | 1 707  | ..      | 961    | ..      | 9                   | 5.3     | 711       | ..      |
| September qtr    | 1 173  | ..      | 987    | ..      | 11                  | 9.4     | 346       | ..      |
| December qtr     | 1 765  | ..      | 956    | ..      | 3                   | 1.7     | 336       | ..      |
| <b>2002</b>      |        |         |        |         |                     |         |           |         |
| March qtr        | 1 528  | ..      | 897    | ..      | 11                  | 7.2     | 1091      | ..      |
| June qtr         | 1 509  | ..      | 996    | ..      | 9                   | 6.0     | 659       | ..      |

(a) Usual residents of Tasmania.

(b) Deaths of children under one year of age.

(c) Total fertility rate. The sum of age specific fertility rates (live births at each age of a mother per female population of that age). It represents the number of children a woman would bear during her lifetime if she experienced age-specific fertility rates at each age of her reproductive life.

(d) Standardised death rate. The overall death rate, per 1,000 persons, that would have prevailed in a standard population if it had experienced at each age the death rates of the population being studied. The standard population used in these calculations is all persons in the 1991 Australian population.

(e) Rate per 1,000 live births.

(f) Crude marriage rate is the number of marriages registered during the financial year, per 1,000 estimated resident population at 31 December of that year.

Source: Australian Demographic Statistics (cat. no. 3101.0).

## 3

## LABOUR FORCE STATUS(a) — SEASONALLY ADJUSTED AND TREND

|             | Seasonally adjusted series(b) |            |                        |                       | Trend series(b) |            |                        |                       |
|-------------|-------------------------------|------------|------------------------|-----------------------|-----------------|------------|------------------------|-----------------------|
|             | Employed                      | Unemployed | Unemploy-<br>ment rate | Participation<br>rate | Employed        | Unemployed | Unemploy-<br>ment rate | Participation<br>rate |
|             | '000                          | '000       | %                      | %                     | '000            | '000       | %                      | %                     |
| MALES       |                               |            |                        |                       |                 |            |                        |                       |
| <b>2001</b> |                               |            |                        |                       |                 |            |                        |                       |
| November    | 110.6                         | 12.7       | 10.3                   | 68.0                  | 110.1           | 12.2       | 10.0                   | 67.5                  |
| December    | 109.7                         | 11.5       | 9.5                    | 66.9                  | 110.3           | 11.8       | 9.7                    | 67.4                  |
| <b>2002</b> |                               |            |                        |                       |                 |            |                        |                       |
| January     | 110.8                         | 11.4       | 9.3                    | 67.4                  | 110.2           | 11.4       | 9.4                    | 67.1                  |
| February    | 110.6                         | 10.5       | 8.6                    | 66.8                  | 109.6           | 11.2       | 9.3                    | 66.7                  |
| March       | 108.7                         | 11.6       | 9.6                    | 66.4                  | 108.9           | 11.2       | 9.3                    | 66.3                  |
| April       | 107.7                         | 11.0       | 9.3                    | 65.5                  | 108.3           | 11.3       | 9.5                    | 66.0                  |
| May         | 106.9                         | 12.0       | 10.1                   | 65.5                  | 108.0           | 11.4       | 9.6                    | 65.8                  |
| June        | 109.2                         | 11.4       | 9.5                    | 66.4                  | 108.0           | 11.4       | 9.6                    | 65.8                  |
| July        | 107.2                         | 11.6       | 9.8                    | 65.4                  | 108.4           | 11.3       | 9.5                    | 65.9                  |
| August      | 109.5                         | 10.4       | 8.7                    | 66.0                  | 109.1           | 11.1       | 9.2                    | 66.1                  |
| September   | 110.5                         | 11.5       | 9.4                    | 67.1                  | 109.7           | 10.9       | 9.0                    | 66.3                  |
| October     | 109.0                         | 10.5       | 8.8                    | 65.7                  | 110.3           | 10.6       | 8.8                    | 66.5                  |
| November    | 112.1                         | 10.1       | 8.2                    | 67.1                  | 110.9           | 10.4       | 8.5                    | 66.6                  |
| FEMALES     |                               |            |                        |                       |                 |            |                        |                       |
| <b>2001</b> |                               |            |                        |                       |                 |            |                        |                       |
| November    | 90.3                          | 6.6        | 6.8                    | 50.5                  | 89.4            | 7.2        | 7.5                    | 50.4                  |
| December    | 88.8                          | 7.0        | 7.3                    | 50.0                  | 89.0            | 7.2        | 7.5                    | 50.2                  |
| <b>2002</b> |                               |            |                        |                       |                 |            |                        |                       |
| January     | 87.6                          | 8.2        | 8.5                    | 49.9                  | 88.7            | 7.2        | 7.5                    | 49.9                  |
| February    | 88.3                          | 8.4        | 8.6                    | 50.3                  | 88.5            | 7.1        | 7.4                    | 49.8                  |
| March       | 88.9                          | 5.9        | 6.2                    | 49.4                  | 88.8            | 6.9        | 7.2                    | 49.8                  |
| April       | 88.7                          | 6.1        | 6.4                    | 49.3                  | 89.2            | 6.8        | 7.1                    | 50.0                  |
| May         | 90.2                          | 6.3        | 6.5                    | 50.2                  | 89.7            | 6.9        | 7.2                    | 50.2                  |
| June        | 90.6                          | 7.3        | 7.5                    | 50.9                  | 89.9            | 7.2        | 7.4                    | 50.5                  |
| July        | 89.5                          | 9.0        | 9.1                    | 51.1                  | 89.8            | 7.5        | 7.7                    | 50.5                  |
| August      | 90.4                          | 7.3        | 7.5                    | 50.7                  | 89.5            | 7.7        | 8.0                    | 50.5                  |
| September   | 87.6                          | 8.1        | 8.4                    | 49.6                  | 89.1            | 7.7        | 8.0                    | 50.3                  |
| October     | 89.6                          | 7.3        | 7.5                    | 50.2                  | 88.8            | 7.6        | 7.9                    | 50.0                  |
| November    | 88.0                          | 7.0        | 7.4                    | 49.2                  | 88.4            | 7.5        | 7.8                    | 49.7                  |
| PERSONS     |                               |            |                        |                       |                 |            |                        |                       |
| <b>2001</b> |                               |            |                        |                       |                 |            |                        |                       |
| November    | 200.9                         | 19.3       | 8.8                    | 59.0                  | 199.5           | 19.5       | 8.9                    | 58.7                  |
| December    | 198.5                         | 18.6       | 8.6                    | 58.2                  | 199.3           | 19.0       | 8.7                    | 58.5                  |
| <b>2002</b> |                               |            |                        |                       |                 |            |                        |                       |
| January     | 198.4                         | 19.6       | 9.0                    | 58.4                  | 198.8           | 18.6       | 8.6                    | 58.3                  |
| February    | 198.9                         | 18.8       | 8.6                    | 58.3                  | 198.2           | 18.3       | 8.5                    | 58.0                  |
| March       | 197.7                         | 17.5       | 8.1                    | 57.6                  | 197.7           | 18.1       | 8.4                    | 57.8                  |
| April       | 196.4                         | 17.1       | 8.0                    | 57.2                  | 197.6           | 18.1       | 8.4                    | 57.7                  |
| May         | 197.0                         | 18.3       | 8.5                    | 57.6                  | 197.6           | 18.4       | 8.5                    | 57.8                  |
| June        | 199.8                         | 18.7       | 8.6                    | 58.4                  | 197.9           | 18.7       | 8.6                    | 57.9                  |
| July        | 196.7                         | 20.6       | 9.5                    | 58.1                  | 198.2           | 18.9       | 8.7                    | 58.0                  |
| August      | 200.0                         | 17.8       | 8.2                    | 58.2                  | 198.6           | 18.8       | 8.7                    | 58.1                  |
| September   | 198.0                         | 19.5       | 9.0                    | 58.1                  | 198.8           | 18.6       | 8.5                    | 58.0                  |
| October     | 198.6                         | 17.7       | 8.2                    | 57.7                  | 199.1           | 18.2       | 8.4                    | 58.0                  |
| November    | 200.1                         | 17.1       | 7.9                    | 57.9                  | 199.3           | 17.8       | 8.2                    | 57.9                  |

(a) For explanation of terms and concepts, refer to *Labour Force, Australia, Preliminary* (cat. no. 6202.0). At April 2001, estimates for prior periods were revised because of some minor definitional changes.

(b) Seasonal factors are reviewed annually to take account of each additional year's data. The results of the review are used to compile revised seasonally adjusted and trend estimates each February. Trend estimates for the most recent months are also revised each month; see Notes on page 2.

Source: *Labour Force, Australia, Preliminary* (cat. no. 6202.0.).

## 4

## LABOUR FORCE STATUS BY REGION — MALES(a)(b)

|   | <i>Total employed</i> | <i>Total unemployed</i> | <i>Unemployment rate</i> | <i>Participation rate</i> |
|---|-----------------------|-------------------------|--------------------------|---------------------------|
|   | '000                  | '000                    | %                        | %                         |
| HOBART AND SOUTHERN STATISTICAL DIVISIONS |                       |                         |                          |                           |
| <b>2000</b>                               |                       |                         |                          |                           |
| October                                   | 50.5                  | 6.4                     | 11.2                     | 65.1                      |
| <b>2001</b>                               |                       |                         |                          |                           |
| October                                   | 51.0                  | 6.0                     | 10.6                     | 65.9                      |
| <b>2002</b>                               |                       |                         |                          |                           |
| August                                    | 50.1                  | 5.2                     | 9.4                      | 63.9                      |
| September                                 | 51.4                  | 5.8                     | 10.1                     | 65.4                      |
| October                                   | 50.5                  | 5.1                     | 9.2                      | 64.1                      |
| NORTHERN STATISTICAL DIVISION             |                       |                         |                          |                           |
| <b>2000</b>                               |                       |                         |                          |                           |
| October                                   | 35.6                  | 2.9                     | 7.6                      | 72.9                      |
| <b>2001</b>                               |                       |                         |                          |                           |
| October                                   | 33.5                  | 3.2                     | 8.7                      | 68.5                      |
| <b>2002</b>                               |                       |                         |                          |                           |
| August                                    | 32.5                  | 2.6                     | 7.4                      | 65.2                      |
| September                                 | 33.2                  | 3.2                     | 8.9                      | 67.3                      |
| October                                   | 33.1                  | 2.4                     | 6.9                      | 65.8                      |
| MERSEY-LYELL STATISTICAL DIVISION         |                       |                         |                          |                           |
| <b>2000</b>                               |                       |                         |                          |                           |
| October                                   | 23.9                  | 3.0                     | 11.1                     | 66.3                      |
| <b>2001</b>                               |                       |                         |                          |                           |
| October                                   | 24.7                  | 2.9                     | 10.4                     | 67.1                      |
| <b>2002</b>                               |                       |                         |                          |                           |
| August                                    | 25.4                  | 3.4                     | 11.8                     | 69.7                      |
| September                                 | 25.5                  | 2.7                     | 9.6                      | 70.0                      |
| October                                   | 24.6                  | 2.6                     | 9.5                      | 66.2                      |
| TASMANIA                                  |                       |                         |                          |                           |
| <b>2000</b>                               |                       |                         |                          |                           |
| October                                   | 109.9                 | 12.3                    | 10.1                     | 67.6                      |
| <b>2001</b>                               |                       |                         |                          |                           |
| October                                   | 109.2                 | 12.1                    | 9.9                      | 66.9                      |
| <b>2002</b>                               |                       |                         |                          |                           |
| August                                    | 108.0                 | 11.2                    | 9.4                      | 65.6                      |
| September                                 | 110.1                 | 11.8                    | 9.6                      | 67.0                      |
| October                                   | 108.3                 | 10.1                    | 8.6                      | 65.1                      |

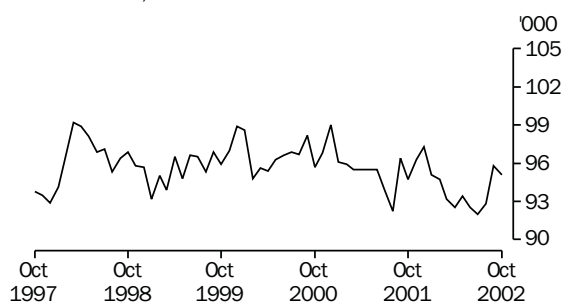
(a) For explanation of terms and concepts, refer to *Labour Force, Australia* (cat. no. 6203.0).

(b) Data in this table are original series, i.e. they are not part of a seasonally adjusted or a trend series. Accordingly, care should be exercised when using these data.

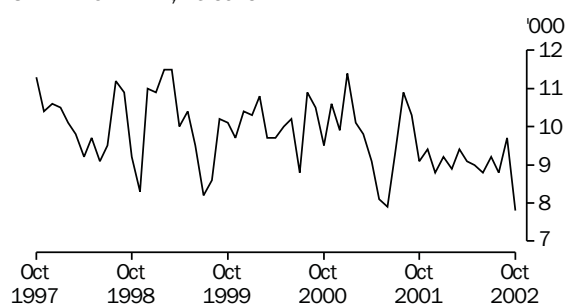
Source: *Labour Force, Selected Summary Tables, Australia* (cat. no. 6291.0.40.001).

## Hobart and Southern Statistical Divisions (see table 6)

EMPLOYMENT, Persons



UNEMPLOYMENT, Persons



# 5

## LABOUR FORCE STATUS BY REGION — FEMALES(a)(b)

|   | Total employed | Total unemployed | Unemployment rate | Participation rate |
|---|----------------|------------------|-------------------|--------------------|
|   | '000           | '000             | %                 | %                  |
| HOBART AND SOUTHERN STATISTICAL DIVISIONS |                |                  |                   |                    |
| <b>2000</b>                               |                |                  |                   |                    |
| October                                   | 45.1           | 3.1              | 6.4               | 52.1               |
| <b>2001</b>                               |                |                  |                   |                    |
| October                                   | 43.8           | 3.1              | 6.6               | 50.2               |
| <b>2002</b>                               |                |                  |                   |                    |
| August                                    | 42.7           | 3.6              | 7.8               | 49.7               |
| September                                 | 44.5           | 3.9              | 8.1               | 51.5               |
| October                                   | 44.6           | 2.7              | 5.7               | 50.5               |
| NORTHERN STATISTICAL DIVISIONS            |                |                  |                   |                    |
| <b>2000</b>                               |                |                  |                   |                    |
| October                                   | 26.2           | 2.1              | 7.6               | 50.9               |
| <b>2001</b>                               |                |                  |                   |                    |
| October                                   | 27.2           | 1.6              | 5.6               | 51.6               |
| <b>2002</b>                               |                |                  |                   |                    |
| August                                    | 25.0           | 1.9              | 7.1               | 50.3               |
| September                                 | 24.7           | 2.4              | 8.8               | 50.5               |
| October                                   | 25.6           | 2.2              | 8.0               | 50.4               |
| MERSEY-LYELL STATISTICAL DIVISIONS        |                |                  |                   |                    |
| <b>2000</b>                               |                |                  |                   |                    |
| October                                   | 17.9           | 2.7              | 13.0              | 48.3               |
| <b>2001</b>                               |                |                  |                   |                    |
| October                                   | 18.9           | 1.9              | 9.3               | 49.0               |
| <b>2002</b>                               |                |                  |                   |                    |
| August                                    | 20.7           | 2.3              | 9.8               | 50.1               |
| September                                 | 19.2           | 2.3              | 10.6              | 47.8               |
| October                                   | 19.1           | 2.5              | 11.7              | 49.2               |
| TASMANIA                                  |                |                  |                   |                    |
| <b>2000</b>                               |                |                  |                   |                    |
| October                                   | 89.2           | 7.9              | 8.1               | 50.9               |
| <b>2001</b>                               |                |                  |                   |                    |
| October                                   | 89.9           | 6.7              | 6.9               | 50.4               |
| <b>2002</b>                               |                |                  |                   |                    |
| August                                    | 88.5           | 7.8              | 8.1               | 50.0               |
| September                                 | 88.5           | 8.6              | 8.8               | 50.4               |
| October                                   | 89.3           | 7.4              | 7.7               | 50.2               |

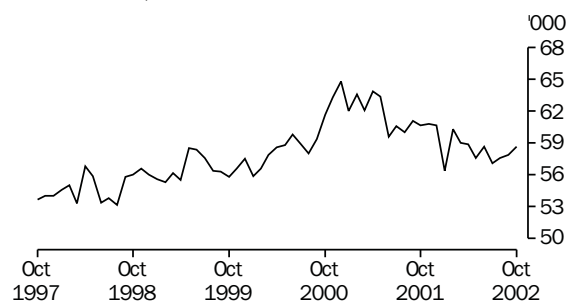
(a) For explanation of terms and concepts, refer to *Labour Force, Australia* (cat. no. 6203.0).

(b) Data in this table are original series, i.e. they are not part of a seasonally adjusted or a trend series. Accordingly, care should be exercised when using these data.

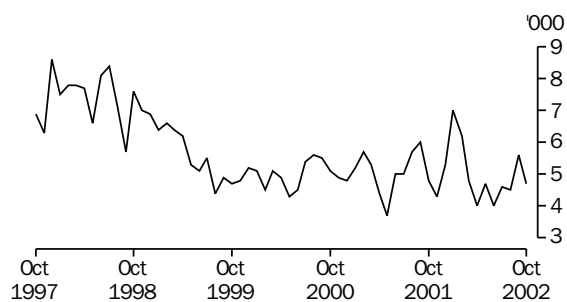
Source: *Labour Force, Selected Summary Tables, Australia* (cat. no. 6291.0.40.001).

Northern Statistical Division (see table 6)

EMPLOYMENT, Persons



UNEMPLOYMENT, Persons



## 6

## LABOUR FORCE STATUS BY REGION — PERSONS(a)(b)

|   | Total employed | Total unemployed | Unemployment rate | Participation rate |
|---|----------------|------------------|-------------------|--------------------|
|   | '000           | '000             | %                 | %                  |
| HOBART AND SOUTHERN STATISTICAL DIVISIONS |                |                  |                   |                    |
| <b>2000</b>                               |                |                  |                   |                    |
| October                                   | 95.7           | 9.5              | 9.0               | 58.4               |
| <b>2001</b>                               |                |                  |                   |                    |
| October                                   | 94.7           | 9.1              | 8.8               | 57.7               |
| <b>2002</b>                               |                |                  |                   |                    |
| August                                    | 92.8           | 8.8              | 8.7               | 56.5               |
| September                                 | 95.8           | 9.7              | 9.2               | 58.2               |
| October                                   | 95.1           | 7.8              | 7.6               | 57.1               |
| NORTHERN STATISTICAL DIVISION             |                |                  |                   |                    |
| <b>2000</b>                               |                |                  |                   |                    |
| October                                   | 61.7           | 5.1              | 7.6               | 61.6               |
| <b>2001</b>                               |                |                  |                   |                    |
| October                                   | 60.7           | 4.8              | 7.3               | 59.9               |
| <b>2002</b>                               |                |                  |                   |                    |
| August                                    | 57.6           | 4.5              | 7.3               | 57.8               |
| September                                 | 57.9           | 5.6              | 8.8               | 59.0               |
| October                                   | 58.7           | 4.7              | 7.4               | 58.0               |
| MERSEY-LYELL STATISTICAL DIVISION         |                |                  |                   |                    |
| <b>2000</b>                               |                |                  |                   |                    |
| October                                   | 41.8           | 5.7              | 11.9              | 57.1               |
| <b>2001</b>                               |                |                  |                   |                    |
| October                                   | 43.6           | 4.8              | 9.9               | 57.9               |
| <b>2002</b>                               |                |                  |                   |                    |
| August                                    | 46.1           | 5.7              | 10.9              | 59.4               |
| September                                 | 44.8           | 5.0              | 10.1              | 58.3               |
| October                                   | 43.8           | 5.1              | 10.5              | 57.4               |
| TASMANIA                                  |                |                  |                   |                    |
| <b>2000</b>                               |                |                  |                   |                    |
| October                                   | 199.2          | 20.2             | 9.2               | 59.1               |
| <b>2001</b>                               |                |                  |                   |                    |
| October                                   | 199.1          | 18.7             | 8.6               | 58.4               |
| <b>2002</b>                               |                |                  |                   |                    |
| August                                    | 196.5          | 19.0             | 8.8               | 57.6               |
| September                                 | 198.5          | 20.3             | 9.3               | 58.4               |
| October                                   | 197.6          | 17.6             | 8.2               | 57.4               |

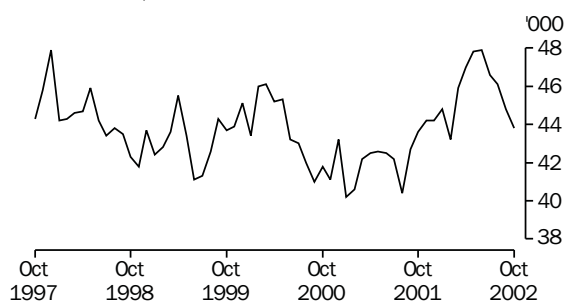
(a) For explanation of terms and concepts, refer to *Labour Force, Australia* (cat. no. 6203.0).

(b) Data in this table are original series, i.e. they are not part of a seasonally adjusted or a trend series. Accordingly, care should be exercised when using these data.

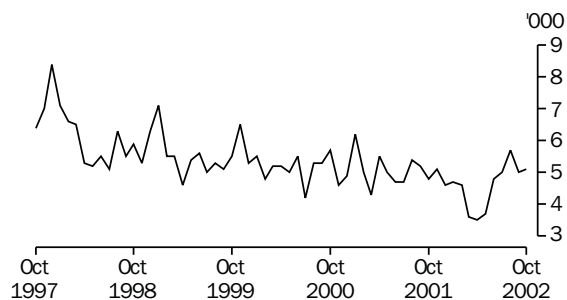
Source: *Labour Force, Selected Summary Tables, Australia* (cat. no. 6291.0.40.001).

## Mersey-Lyell Statistical Division (see table 6)

EMPLOYMENT, Persons



UNEMPLOYMENT, Persons



## 7

## TEENAGE LABOUR MARKET(a)

|   | <i>Employed</i>  |              | <i>Unemployed</i>                 |              | <i>Labour force</i> | <i>Not in labour force</i> | <i>Civilian population aged 15-19</i> | <i>Unemployment rate</i> | <i>Unemployment population ratio</i> | <i>Participation rate</i> |
|---|------------------|--------------|-----------------------------------|--------------|---------------------|----------------------------|---------------------------------------|--------------------------|--------------------------------------|---------------------------|
|   | <i>Full time</i> | <i>Total</i> | <i>Looking for full time work</i> | <i>Total</i> |                     |                            |                                       |                          |                                      |                           |
|   | '000             | '000         | '000                              | '000         |                     |                            |                                       |                          |                                      |                           |
| ATTENDING NEITHER A SCHOOL NOR A TERTIARY INSTITUTION FULL TIME |                  |              |                                   |              |                     |                            |                                       |                          |                                      |                           |
| <b>2000</b>   |                  |              |                                   |              |                     |                            |                                       |                          |                                      |                           |
| November  | 5.0              | 7.6          | 1.9                               | 2.0          | 9.6                 | 1.2                        | 10.8                                  | 20.7                     | 18.4                                 | 88.8                      |
| <b>2001</b>   |                  |              |                                   |              |                     |                            |                                       |                          |                                      |                           |
| November  | 6.4              | 8.2          | 1.9                               | 2.0          | 10.2                | 1.9                        | 12.2                                  | 19.9                     | 16.7                                 | 84.0                      |
| <b>2002</b>   |                  |              |                                   |              |                     |                            |                                       |                          |                                      |                           |
| September   | 6.5              | 8.2          | 1.6                               | 1.6          | 9.9                 | 1.3                        | 11.2                                  | 16.4                     | 14.5                                 | 88.0                      |
| October   | 5.1              | 7.1          | 1.9                               | 1.9          | 9.1                 | 1.6                        | 10.7                                  | 21.4                     | 18.2                                 | 84.8                      |
| November  | 5.8              | 7.5          | 1.9                               | 1.9          | 9.4                 | 2.0                        | 11.4                                  | 20.6                     | 17.0                                 | 82.5                      |
| ATTENDING SCHOOL OR A TERTIARY INSTITUTION FULL TIME            |                  |              |                                   |              |                     |                            |                                       |                          |                                      |                           |
| <b>2000</b>   |                  |              |                                   |              |                     |                            |                                       |                          |                                      |                           |
| November  | **0.3            | 7.6          | *0.6                              | 2.2          | 9.7                 | 14.1                       | 23.9                                  | 22.2                     | 9.1                                  | 40.8                      |
| <b>2001</b>   |                  |              |                                   |              |                     |                            |                                       |                          |                                      |                           |
| November  | **0.1            | 5.7          | *1.0                              | 1.8          | 7.5                 | 14.6                       | 22.1                                  | 24.0                     | 8.1                                  | 33.9                      |
| <b>2002</b>   |                  |              |                                   |              |                     |                            |                                       |                          |                                      |                           |
| September   | **0.2            | 7.3          | **0.4                             | 3.1          | 10.4                | 12.4                       | 22.8                                  | 29.9                     | 13.7                                 | 45.7                      |
| October   | **0.1            | 7.2          | **0.3                             | 2.5          | 9.7                 | 13.6                       | 23.3                                  | 25.6                     | 10.7                                 | 41.6                      |
| November  | **0.1            | 6.8          | *0.7                              | 2.1          | 8.9                 | 13.7                       | 22.6                                  | 23.5                     | 9.2                                  | 39.3                      |
| TOTAL   |                  |              |                                   |              |                     |                            |                                       |                          |                                      |                           |
| <b>2000</b>   |                  |              |                                   |              |                     |                            |                                       |                          |                                      |                           |
| November  | 5.3              | 15.2         | 2.5                               | 4.1          | 19.3                | 15.3                       | 34.7                                  | 21.5                     | 12.0                                 | 55.7                      |
| <b>2001</b>   |                  |              |                                   |              |                     |                            |                                       |                          |                                      |                           |
| November  | 6.5              | 13.9         | 2.9                               | 3.8          | 17.7                | 16.5                       | 34.3                                  | 21.6                     | 11.2                                 | 51.7                      |
| <b>2002</b>   |                  |              |                                   |              |                     |                            |                                       |                          |                                      |                           |
| September   | 6.7              | 15.6         | 2.0                               | 4.7          | 20.3                | 13.7                       | 34.0                                  | 23.4                     | 13.9                                 | 59.6                      |
| October   | 5.2              | 14.3         | 2.2                               | 4.4          | 18.8                | 15.2                       | 34.0                                  | 23.6                     | 13.0                                 | 55.2                      |
| November  | 5.9              | 14.2         | 2.6                               | 4.0          | 18.3                | 15.7                       | 34.0                                  | 22.1                     | 11.9                                 | 53.8                      |

(a) Persons aged 15-19 years. For explanation of terms and concepts, refer to *Labour Force, Australia* (cat. no. 6203.0). Care should be exercised when using these series as some estimates are subject to high sampling variability.

Source: ABS data available on request, *Labour Force, Estimates; Labour Force, Teenage Employment and Unemployment, Australia, Preliminary, Data Report* (cat. no. 6202.0.40.001).

## ALL EMPLOYED PERSONS BY OCCUPATION(a)(b)

|  | August 2001  |              |             | August 2002  |              |                              |             |
|--|--------------|--------------|-------------|--------------|--------------|------------------------------|-------------|
|  | Persons      |              | Females     | Persons      |              | Proportion of total employed |             |
|  | '000         | Males        |             | '000         | '000         | August 2001                  | August 2002 |
|  |              |              |             |              | %            | %                            |             |
| <b>Managers and administrators</b>                       |              |              |             |              |              |                              |             |
| Generalist managers                                      | 2.0          | 2.1          | **0.2       | 2.3          | 1.0          | 1.2                          |             |
| Specialist managers                                      | 5.4          | 4.5          | *0.9        | 5.4          | 2.8          | 2.8                          |             |
| Farmers and farm managers                                | 8.2          | 4.9          | 1.7         | 6.5          | 4.2          | 3.3                          |             |
| <i>Total</i>   | 15.5         | 11.5         | 2.9         | 14.3         | 8.1          | 7.3                          |             |
| <b>Professionals</b>                                     |              |              |             |              |              |                              |             |
| Science, building and engineering professionals          | 4.1          | 3.3          | **0.4       | 3.8          | 2.1          | 1.9                          |             |
| Business and information professionals                   | 6.8          | 3.8          | 2.3         | 6.1          | 3.5          | 3.1                          |             |
| Health professionals                                     | 6.8          | 1.9          | 5.6         | 7.5          | 3.5          | 3.8                          |             |
| Education professionals                                  | 7.8          | 2.8          | 6.5         | 9.3          | 4.0          | 4.7                          |             |
| Social, arts and miscellaneous professionals             | 5.8          | 3.7          | 2.3         | 6.0          | 3.0          | 3.0                          |             |
| <i>Total</i>   | 31.2         | 15.4         | 17.1        | 32.5         | 16.2         | 16.6                         |             |
| <b>Associate professionals</b>                           |              |              |             |              |              |                              |             |
| Science, engineering and related associate professionals | 3.7          | 3.1          | **0.5       | 3.6          | 1.9          | 1.8                          |             |
| Business and administration associate professionals      | 5.6          | 3.0          | 3.4         | 6.4          | 2.9          | 3.3                          |             |
| Managing supervisors (sales and service)                 | 8.7          | 5.1          | 2.9         | 8.0          | 4.5          | 4.1                          |             |
| Health and welfare associate professionals               | 1.5          | **           | *1.0        | 1.5          | 0.8          | 0.8                          |             |
| Other associate professionals                            | 4.9          | 2.5          | 1.9         | 4.4          | 2.5          | 2.2                          |             |
| <i>Total</i>   | 22.9         | 13.7         | 8.7         | 22.4         | 11.9         | 11.4                         |             |
| <b>Tradespersons and related workers</b>                 |              |              |             |              |              |                              |             |
| Mechanical and fabrication engineering tradespersons     | 4.1          | 4.5          | **0.1       | 4.6          | 2.1          | 2.3                          |             |
| Automotive tradespersons                                 | 2.6          | 2.4          | **0.1       | 2.5          | 1.4          | 1.3                          |             |
| Electrical and electronics tradespersons                 | 3.7          | 3.4          | —           | 3.4          | 1.9          | 1.8                          |             |
| Construction tradespersons                               | 5.9          | 5.3          | **0.2       | 5.5          | 3.1          | 2.8                          |             |
| Other tradespersons and related workers                  | 10.1         | 5.2          | 2.0         | 7.2          | 5.3          | 3.7                          |             |
| <i>Total</i>   | 26.5         | 20.8         | 2.4         | 23.2         | 13.8         | 11.8                         |             |
| <b>Advanced clerical and service workers</b>             |              |              |             |              |              |                              |             |
| Secretaries and personal assistants                      | 2.0          | **0.1        | 2.2         | 2.4          | 1.0          | 1.2                          |             |
| Other advanced clerical and service workers              | 3.5          | 1.2          | 1.9         | 3.1          | 1.8          | 1.6                          |             |
| <i>Total</i>   | 5.5          | 1.3          | 4.2         | 5.5          | 2.8          | 2.8                          |             |
| <b>Intermediate clerical, sales and service workers</b>  |              |              |             |              |              |                              |             |
| Intermediate clerical workers                            | 20.4         | 3.0          | 17.3        | 20.3         | 10.6         | 10.4                         |             |
| Intermediate sales and related workers                   | 2.6          | 2.1          | *1.0        | 3.2          | 1.4          | 1.6                          |             |
| Intermediate service workers                             | 11.4         | 3.9          | 9.0         | 12.9         | 5.9          | 6.6                          |             |
| <i>Total</i>   | 34.4         | 9.1          | 27.3        | 36.4         | 17.9         | 18.5                         |             |
| <b>Intermediate production and transport workers</b>     |              |              |             |              |              |                              |             |
| Intermediate plant operators                             | 6.0          | 4.8          | **0.1       | 4.9          | 3.1          | 2.5                          |             |
| Intermediate machine operators                           | 1.7          | 1.2          | **0.5       | 1.6          | 0.9          | 0.8                          |             |
| Road and rail transport drivers                          | 6.3          | 5.4          | **0.5       | 5.9          | 3.3          | 3.0                          |             |
| Other intermediate production and transport workers      | 3.7          | 3.2          | *0.7        | 3.9          | 1.9          | 2.0                          |             |
| <i>Total</i>   | 17.6         | 14.5         | 1.8         | 16.3         | 9.1          | 8.3                          |             |
| <b>Elementary clerical, sales and service workers</b>    |              |              |             |              |              |                              |             |
| Elementary clerks  | 1.3          | **0.4        | *1.0        | 1.3          | 0.7          | 0.7                          |             |
| Elementary sales workers                                 | 14.5         | 5.1          | 13.2        | 18.2         | 7.5          | 9.3                          |             |
| Elementary service workers                               | 1.6          | *0.7         | *1.1        | 1.8          | 0.8          | 0.9                          |             |
| <i>Total</i>   | 17.4         | 6.1          | 15.2        | 21.4         | 9.0          | 10.9                         |             |
| <b>Labourers and related workers</b>                     |              |              |             |              |              |                              |             |
| Cleaners   | 5.7          | 2.3          | 3.7         | 6.0          | 3.0          | 3.0                          |             |
| Factory labourers  | 5.6          | 5.1          | 1.6         | 6.7          | 2.9          | 3.4                          |             |
| Other labourers and related workers                      | 10.3         | 8.2          | 3.6         | 11.8         | 5.3          | 6.0                          |             |
| <i>Total</i>   | 21.7         | 15.5         | 8.9         | 24.4         | 11.2         | 12.4                         |             |
| <b>Total employed</b>                                    | <b>192.7</b> | <b>108.0</b> | <b>88.5</b> | <b>196.5</b> | <b>100.0</b> | <b>100.0</b>                 |             |

(a) For explanation of terms and concepts, refer to *Labour Force, Australia* (cat. no. 6203.0).

(b) Classified according to the Australian Standard Classification of Occupations (ASCO), Second edition.

Source: ABS data available on request, *Labour Force, Estimates*.

## 9

## EMPLOYED PERSONS BY INDUSTRY(a)(b)

|                                       | Number of employees |               |               |              |              |
|---------------------------------------|---------------------|---------------|---------------|--------------|--------------|
|                                       | August 2001         | November 2001 | February 2002 | May 2002     | August 2002  |
|                                       | '000                | '000          | '000          | '000         | '000         |
| Agriculture, forestry and fishing     | 18.5                | 18.9          | 16.5          | 17.4         | 16.0         |
| Mining                                | 1.7                 | 1.2           | 1.8           | 1.8          | 1.8          |
| Manufacturing                         | 21.8                | 21.9          | 21.0          | 20.7         | 21.3         |
| Electricity, gas and water supply     | 1.7                 | 2.3           | 2.0           | 2.2          | 1.9          |
| Construction                          | 11.1                | 10.3          | 10.6          | 11.3         | 12.0         |
| Wholesale trade                       | 7.4                 | 8.1           | 9.4           | 9.4          | 7.7          |
| Retail trade                          | 30.1                | 32.4          | 32.3          | 31.5         | 30.5         |
| Accommodation, cafes and restaurants  | 8.6                 | 10.3          | 10.8          | 9.1          | 7.5          |
| Transport and storage                 | 7.6                 | 8.0           | 7.6           | 8.9          | 8.9          |
| Communication services                | 2.7                 | 3.0           | 3.7           | 3.0          | 2.7          |
| Finance and insurance                 | 3.9                 | 5.8           | 6.1           | 6.1          | 5.9          |
| Property and business services        | 14.8                | 16.3          | 15.5          | 14.6         | 14.4         |
| Government administration and defence | 11.4                | 10.7          | 10.3          | 10.6         | 11.0         |
| Education                             | 13.5                | 13.8          | 13.2          | 15.3         | 16.0         |
| Health and community services         | 23.7                | 23.9          | 22.7          | 23.8         | 24.1         |
| Cultural and recreational services    | 5.2                 | 5.8           | 6.2           | 4.9          | 5.9          |
| Personal and other services           | 9.0                 | 8.8           | 8.5           | 8.2          | 8.8          |
| <b>Total all industries</b>           | <b>192.7</b>        | <b>201.5</b>  | <b>198.2</b>  | <b>198.8</b> | <b>196.4</b> |

(a) For explanation of terms and concepts, refer to *Labour Force, Australia* (cat. no. 6203.0).

(b) Small movements are subject to high sample variability and should be used with caution.

Source: ABS data available on request; Labour Force Survey.

## 10

## AVERAGE HOURS WORKED

|             | Average weekly total hours worked, all employed persons(a) |         |         |
|-------------|--|---------|---------|
|             | Males  | Females | Persons |
| <b>2001</b> |  |         |         |
| May         | 40.4   | 27.3    | 34.5    |
| August      | 38.0   | 27.3    | 33.1    |
| November    | 37.9   | 27.2    | 33.1    |
| <b>2002</b> |  |         |         |
| February    | 37.3   | 25.1    | 31.9    |
| May         | 38.8   | 26.8    | 33.3    |
| August      | 38.4   | 27.1    | 33.3    |

(a) For explanation of terms and concepts, refer to *Labour Force, Australia* (cat. no. 6203.0).

Source: ABS data available on request; Labour Force Survey.



# 11

## JOB VACANCIES(a)(b)

|             | <i>no.</i> | <i>rate(c)</i> |
|-------------|------------|----------------|
|             | '000       | %              |
| <b>2001</b> |            |                |
| May         | 1.7        | 1.0            |
| August      | 1.4        | 0.8            |
| November    | *1.8       | 1.1            |
| <b>2002</b> |            |                |
| February    | 1.5        | 0.9            |
| May         | *1.7       | *1.0           |
| August      | *2.2       | *1.4           |

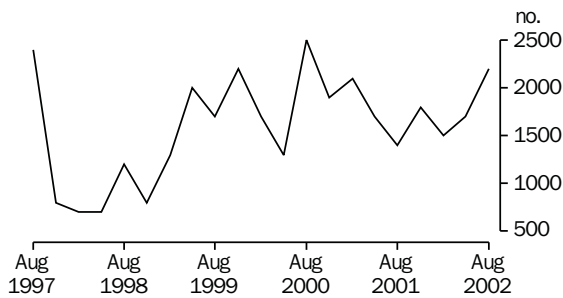
(a) For explanation of terms and concepts, refer to *Job Vacancies, Australia* (cat. no. 6354.0).

(b) Care should be exercised in using these series as some estimates are subject to high sampling variability.

(c) Job vacancies expressed as a percentage of the number of employees plus job vacancies.

Source: *Job Vacancies, Australia* (cat. no. 6354.0).

### JOB VACANCIES, TASMANIA



# 12

## INDUSTRIAL DISPUTES(a) — 12 MONTHS ENDED

|             | <i>Working days lost</i> | <i>Working days lost per thousand employees</i> |
|-------------|--------------------------|---|
|             | '000                     | <i>no.</i>                                      |
| <b>2001</b> |                          |   |
| August      | 0.6                      | 4   |
| September   | 0.6                      | 3   |
| October     | 0.6                      | 3   |
| November    | 0.5                      | 3   |
| December    | 1.2                      | 7   |
| <b>2002</b> |                          |   |
| January     | 1.2                      | 7   |
| February    | 1.2                      | 7   |
| March       | 3.0                      | 18  |
| April       | 3.0                      | 17  |
| May         | 3.0                      | 18  |
| June        | 3.0                      | 18  |
| July        | 3.0                      | 18  |
| August      | 3.1                      | 18  |

(a) For explanation of terms and concepts, refer to *Industrial Disputes, Australia* (cat. no. 6321.0).

Source: *Industrial Disputes, Australia* (cat. no. 6321.0).

## AVERAGE WEEKLY EARNINGS OF EMPLOYEES(a) — ORIGINAL AND TREND

|             | Males  |                                      |                                | Females  |                                      |                                  | Persons  |                                      |                                 |
|-------------|--|--------------------------------------|--------------------------------|--|--------------------------------------|----------------------------------|--|--------------------------------------|---------------------------------|
|             | Full-time<br>adult<br>ordinary<br>time<br>earnings | Full-time<br>adult total<br>earnings | All males<br>total<br>earnings | Full-time<br>adult<br>ordinary<br>time<br>earnings | Full-time<br>adult total<br>earnings | All females<br>total<br>earnings | Full-time<br>adult<br>ordinary<br>time<br>earnings | Full-time<br>adult total<br>earnings | All employees<br>total earnings |
| ORIGINAL    |  |                                      |                                |  |                                      |                                  |  |                                      |                                 |
| <b>2001</b> |  |                                      |                                |  |                                      |                                  |  |                                      |                                 |
| May         | 788.7  | 820.9                                | 685.2                          | 691.3  | 704.1                                | 462.9                            | 755.9  | 781.5                                | 576.6                           |
| August      | 789.2  | 821.9                                | 688.5                          | 701.1  | 717.7                                | 474.1                            | 758.1  | 785.2                                | 581.9                           |
| November    | 812.0  | 848.8                                | 720.6                          | 717.4  | 735.8                                | 457.3                            | 778.7  | 809.0                                | 584.2                           |
| <b>2002</b> |  |                                      |                                |  |                                      |                                  |  |                                      |                                 |
| February    | 830.5  | 867.8                                | 711.9                          | 716.1  | 731.6                                | 458.6                            | 788.8  | 818.2                                | 582.8                           |
| May         | 828.0  | 869.4                                | 713.9                          | 720.1  | 735.7                                | 451.8                            | 790.0  | 822.4                                | 579.1                           |
| August      | 841.6  | 877.9                                | 740.2                          | 748.9  | 762.2                                | 473.8                            | 812.8  | 841.8                                | 611.5                           |
| TREND(b)    |  |                                      |                                |  |                                      |                                  |  |                                      |                                 |
| <b>2001</b> |  |                                      |                                |  |                                      |                                  |  |                                      |                                 |
| May         | 787.6  | 820.1                                | 684.9                          | 692.3  | 707.2                                | 466.2                            | 754.0  | 780.2                                | 575.9                           |
| August      | 796.9  | 830.7                                | 699.4                          | 704.7  | 720.2                                | 469.5                            | 764.7  | 792.1                                | 584.5                           |
| November    | 809.4  | 845.3                                | 707.0                          | 710.0  | 726.3                                | 462.1                            | 773.9  | 803.0                                | 582.1                           |
| <b>2002</b> |  |                                      |                                |  |                                      |                                  |  |                                      |                                 |
| February    | 822.4  | 859.9                                | 712.2                          | 716.8  | 732.9                                | 456.2                            | 784.6  | 814.6                                | 581.0                           |
| May         | 833.9  | 872.7                                | 722.6                          | 729.3  | 745.3                                | 458.3                            | 797.7  | 828.6                                | 588.8                           |
| August      | 844.1  | 885.0                                | 738.6                          | 745.4  | 761.3                                | 466.3                            | 812.1  | 844.6                                | 603.5                           |

(a) For explanation of terms and concepts, refer to *Average Weekly Earnings, Australia* (cat. no. 6302.0).

(b) ABS trend estimates for the most recent months are revised, see Notes on page 2.

Source: *Average Weekly Earnings, Australia* (cat. no. 6302.0).

|  | Index numbers   |                 |                 |                 | Percentage change                     |                                       |
|--|-----------------|-----------------|-----------------|-----------------|---------------------------------------|---------------------------------------|
|  | Dec qtr<br>2001 | Mar qtr<br>2002 | Jun qtr<br>2002 | Sep qtr<br>2002 | Mar qtr<br>2002 to<br>Jun qtr<br>2002 | Jun qtr<br>2002 to<br>Sep qtr<br>2002 |
| SELECTED INDUSTRIES(c)                         |                 |                 |                 |                 |                                       |                                       |
| Manufacturing                                  | 111.8           | 113.0           | 113.6           | 114.6           | 0.5                                   | 0.9                                   |
| Retail trade                                   | 111.2           | 111.5           | 112.0           | 113.5           | 0.4                                   | 1.3                                   |
| Government administration and defence          | 111.1           | 112.1           | 112.2           | 113.5           | 0.1                                   | 1.2                                   |
| Education                                      | 114.7           | 116.3           | 118.1           | 119.3           | 1.5                                   | 1.0                                   |
| Health and community services                  | 110.4           | 111.6           | 112.5           | 113.1           | 0.8                                   | 0.5                                   |
| <b>All industries(d)</b>                       | <b>112.1</b>    | <b>113.1</b>    | <b>113.7</b>    | <b>115.0</b>    | <b>0.5</b>                            | <b>1.1</b>                            |
| SELECTED OCCUPATIONS                           |                 |                 |                 |                 |                                       |                                       |
| Professionals                                  | 113.4           | 114.6           | 116.0           | 117.2           | 1.2                                   | 1.0                                   |
| Associate professionals                        | 112.3           | 113.2           | 113.7           | 115.1           | 0.4                                   | 1.2                                   |
| Tradespersons & related workers                | 111.2           | 112.2           | 112.6           | 113.6           | 0.4                                   | 0.9                                   |
| Intermediate clerical, sales & service workers | 111.8           | 113.1           | 113.5           | 114.4           | 0.4                                   | 0.8                                   |
| Intermediate production & transport workers    | 111.7           | 112.5           | 113.1           | 115.9           | 0.5                                   | 2.5                                   |
| Elementary clerical, sales & service workers   | 113.0           | 113.6           | 113.9           | 114.7           | 0.3                                   | 0.7                                   |
| Labourers & related workers                    | 111.1           | 112.3           | 112.8           | 113.7           | 0.4                                   | 0.8                                   |
| <b>All occupations</b>                         | <b>112.1</b>    | <b>113.1</b>    | <b>113.7</b>    | <b>115.0</b>    | <b>0.5</b>                            | <b>1.1</b>                            |

(a) Base of each index: September quarter 1997 = 100.0.

(b) These indexes are a measure of quarterly changes in wage and salary costs for employee jobs. They are one of four sets of indexes that together comprise the Wage Cost Index. For explanation of terms and concepts, refer to *Wage Cost Index, Australia* (cat. no. 6345.0).

(c) Industry is shown at the ANZSIC division level for selected divisions.

(d) Excludes Agriculture, forestry and fishing.

Source: ABS data available on request; Wage Cost Index.

# 15

## SUMMARY OF ANNUAL MOVEMENTS IN WAGES AND PRICES(a), PERCENTAGE CHANGE FROM PREVIOUS YEAR — ORIGINAL

|                  | CPI                 | Price index of materials | Price index of materials | Average weekly total      |
|------------------|---------------------|--------------------------|--------------------------|---------------------------|
|                  | all groups — Hobart | used in house building   | used in building other   | earnings, full-time adult |
|                  | all groups — Hobart | all groups — Hobart      | all groups — Hobart      | employees(b)              |
|                  | %                   | %                        | %                        | %                         |
| <b>1999–2000</b> | 1.9                 | 1.3                      | 0.4                      | 2.5                       |
| <b>2000–01</b>   | 5.8                 | 1.8                      | 0.3                      | 3.2                       |
| <b>2001–02</b>   | 2.0                 | 1.9                      | 1.7                      | —                         |
| <b>2000</b>      |                     |                          |                          |                           |
| September        | 6.5                 | (c)2.5                   | (c)–0.5                  | 5.4                       |
| December         | 5.8                 | 2.4                      | 0.6                      | 3.1                       |
| <b>2001</b>      |                     |                          |                          |                           |
| March            | 5.4                 | 1.4                      | 0.8                      | 2.7                       |
| June             | 5.5                 | 0.8                      | 0.3                      | 1.7                       |
| September        | 1.1                 | 1.7                      | 2.0                      | 2.6                       |
| December         | 2.1                 | 1.6                      | 1.2                      | –4.4                      |
| <b>2002</b>      |                     |                          |                          |                           |
| March            | 2.3                 | 1.8                      | 1.2                      | 6.1                       |
| June             | 2.7                 | 2.3                      | 2.2                      | 5.2                       |
| September        | 3.5                 | 3.4                      | 2.7                      | n.y.a.                    |

(a) See note 5 on page 2 of this issue on the impacts of The New Tax System (TNTS).

(b) March, June, September and December data relates to February, May, August and November survey dates as published in *Average Weekly Earnings, Australia* (cat. no. 6302.0).

(c) This quarter affected by the removal of the Wholesale Sales Tax from 1 July 2000.

Source: ABS data available on request; *Producer Price Index* (cat. no. 6427.0); *Consumer Price Index, Australia* (cat. no. 6401.0); *Average Weekly Earnings, Australia* (cat. no. 6302.0).

# 16

## HOUSE PRICE INDEX NUMBERS(a)(b)

|                  | Established house price index |             | Project home price index |             |
|------------------|-------------------------------|-------------|--------------------------|-------------|
|                  | Index                         | % change(c) | Index                    | % change(c) |
| <b>1998–99</b>   | 123.2                         | –1.8        | 123.3                    | —           |
| <b>1999–2000</b> | 129.0                         | 4.7         | 126.2                    | 2.4         |
| <b>2000–01</b>   | 134.2                         | 4.0         | 140.7                    | 11.5        |
| <b>2000</b>      |                               |             |                          |             |
| June             | 134.2                         | 4.4         | 127.9                    | 0.3         |
| September        | 134.3                         | 0.1         | (d)140.3                 | (d)9.7      |
| December         | 133.7                         | –0.4        | 140.3                    | —           |
| <b>2001</b>      |                               |             |                          |             |
| March            | 133.8                         | 0.1         | 140.5                    | 0.1         |
| June             | 135.1                         | 1.0         | 141.8                    | 0.9         |
| September        | 134.9                         | –0.1        | 142.7                    | 0.6         |
| December         | 138.3                         | 2.5         | 143.4                    | 0.5         |
| <b>2002</b>      |                               |             |                          |             |
| March            | 142.1                         | 2.7         | 144.6                    | 0.8         |
| June             | 144.9                         | 2.0         | 149.7                    | 3.5         |

(a) Base of each Index: 1989–90 = 100.

(b) Used in calculating the mortgage interest charges component of the Consumer Price Index.

(c) Percentage change over previous period.

(d) See note 5 on page 2 of this issue on the impacts of The New Tax System (TNTS) introduced on 1 July 2000.

Source: *House Price Indexes: Eight Capital Cities* (cat. no. 6416.0).

Hobart

|             | Food  | Clothing and footwear | Housing | Household furnishings, supplies and services | Transportation | Alcohol and tobacco |
|-------------|-------|-----------------------|---------|--|----------------|---------------------|
| <b>1999</b> |       |                       |         |  |                |                     |
| September   | 126.3 | 104.5                 | 96.9    | 119.3  | 123.1          | 158.1               |
| December    | 127.5 | 103.9                 | 97.4    | 119.1  | 123.8          | 163.3               |
| <b>2000</b> |       |                       |         |  |                |                     |
| March       | 127.8 | 104.9                 | 98.8    | 120.2  | 126.6          | 167.2               |
| June        | 129.1 | 105.0                 | 99.2    | 121.2  | 129.3          | 169.9               |
| September   | 130.9 | 112.8                 | 105.5   | 124.5  | 133.3          | 179.8               |
| December    | 132.0 | 112.9                 | 105.8   | 124.6  | 130.4          | 181.6               |
| <b>2001</b> |       |                       |         |  |                |                     |
| March       | 134.3 | 110.7                 | 106.9   | 125.6  | 131.4          | 185.4               |
| June        | 136.0 | 112.2                 | 107.2   | 126.6  | 134.6          | 188.6               |
| September   | 135.7 | 109.3                 | 107.4   | 127.3  | 131.5          | 189.4               |
| December    | 138.2 | 113.9                 | 107.8   | 126.9  | 130.4          | 189.5               |
| <b>2002</b> |       |                       |         |  |                |                     |
| March       | 140.4 | 110.9                 | 109.0   | 127.6  | 131.3          | 191.5               |
| June        | 141.1 | 113.3                 | 110.3   | 127.4  | 135.9          | 193.0               |
| September   | 142.0 | 107.4                 | 112.4   | 127.7  | 134.9          | 195.5               |

Hobart

Weighted average of eight capital cities

|             | Health | Education | Index, all groups | % change over previous period, all groups | Index | % change over previous period |
|-------------|--------|-----------|-------------------|---|-------|-------------------------------|
| <b>1999</b> |        |           |                   |   |       |                               |
| September   | 173.3  | 198.8     | 123.3             | 0.7                                       | 123.4 | 0.9                           |
| December    | 172.0  | 198.8     | 124.0             | 0.6                                       | 124.1 | 0.6                           |
| <b>2000</b> |        |           |                   |   |       |                               |
| March       | 175.1  | 206.2     | 125.3             | 1.0                                       | 125.2 | 0.9                           |
| June        | 177.7  | 206.2     | 126.5             | 1.0                                       | 126.2 | 0.8                           |
| September   | 178.0  | 206.5     | 131.3             | 3.8                                       | 130.9 | 3.7                           |
| December    | 177.4  | 206.5     | 131.2             | -0.1                                      | 131.3 | 0.3                           |
| <b>2001</b> |        |           |                   |   |       |                               |
| March       | 181.5  | 215.1     | 132.1             | 0.7                                       | 132.7 | 1.1                           |
| June        | 181.4  | 215.1     | 133.4             | 1.0                                       | 133.8 | 0.8                           |
| September   | 180.3  | 215.0     | 132.8             | -0.4                                      | 134.2 | 0.3                           |
| December    | 180.5  | 215.0     | 133.9             | 0.8                                       | 135.4 | 0.9                           |
| <b>2002</b> |        |           |                   |   |       |                               |
| March       | 185.8  | 221.9     | 135.2             | 1.0                                       | 136.6 | 0.9                           |
| June        | 193.6  | 221.9     | 137.0             | 1.3                                       | 137.6 | 0.7                           |
| September   | 193.4  | 222.7     | 137.5             | 0.4                                       | 138.5 | 0.7                           |

(a) Base year: 1989-90 = 100.

(b) Further information on construction of CPI indexes is contained in the bulletin *Australian Consumer Price Index Concepts, Sources and Methods* (cat. no. 6461.0).(c) As a result of the introduction of the 14th Series Australian CPI there have been changes to some groups and restructuring of some others. See Appendix A4 of the September quarter issue of *Consumer Price Index, Australia* (cat. no. 6401.0) for more information.

(d) See Note 5 on page 2 of this issue on the impacts of The New Tax System (TNTS) introduced on 1 July 2000.

Source: *Consumer Price Index, Australia* (cat. no. 6401.0).

*Index numbers for selected major building materials*

|                  | <i>Structural timber</i> | <i>Clay bricks</i> | <i>Ready mixed concrete</i> | <i>Precast concrete products</i> | <i>Steel decking, cladding etc.</i> | <i>Structural steel</i> |
|------------------|--------------------------|--------------------|-----------------------------|----------------------------------|-------------------------------------|-------------------------|
| <b>1999-2000</b> | 114.4                    | 129.1              | 118.1                       | 131.6                            | 109.6                               | 128.8                   |
| <b>2000-01</b>   | 120.6                    | 132.6              | 117.9                       | 131.6                            | 107.6                               | 129.3                   |
| <b>2001-02</b>   | 123.0                    | 137.0              | 122.7                       | 131.6                            | 104.4                               | 130.2                   |
| <b>2000</b>      |                          |                    |                             |                                  |                                     |                         |
| September(b)     | 120.9                    | 131.6              | 117.6                       | 131.6                            | 106.4                               | 129.1                   |
| December         | 120.9                    | 131.8              | 117.6                       | 131.6                            | 108.2                               | 129.4                   |
| <b>2001</b>      |                          |                    |                             |                                  |                                     |                         |
| March            | 121.4                    | 131.8              | 119.4                       | 131.6                            | 108.2                               | 129.4                   |
| June             | 119.1                    | 135.3              | 116.9                       | 131.6                            | 107.5                               | 129.4                   |
| September        | 122.3                    | 135.3              | 117.0                       | 131.6                            | 107.7                               | 129.4                   |
| December         | 123.1                    | 135.3              | 116.7                       | 131.6                            | 105.6                               | 129.4                   |
| <b>2002</b>      |                          |                    |                             |                                  |                                     |                         |
| March            | 123.2                    | 137.6              | 124.0                       | 131.6                            | 102.5                               | 131.0                   |
| June             | 123.4                    | 139.9              | 133.2                       | 131.6                            | 101.8                               | 131.0                   |
| September        | 124.0                    | 143.9              | 133.8                       | 131.6                            | 107.8                               | 132.1                   |

*Index numbers for selected major building materials*

|                  | <i>Reinforcing steel bar, fabric and mesh</i> | <i>Aluminium windows</i> | <i>Fabricated steel products</i> | <i>Builders hardware</i> | <i>Sand and aggregate</i> | <i>Paint and other coatings</i> | <i>Non-ferrous pipes and fittings</i> |
|------------------|---|--------------------------|----------------------------------|--------------------------|---------------------------|---------------------------------|---------------------------------------|
| <b>1999-2000</b> | 110.5   | 108.5                    | 114.0                            | 116.0                    | 144.0                     | 133.7                           | 168.2                                 |
| <b>2000-01</b>   | 107.8   | 116.8                    | 114.0                            | 119.3                    | 147.9                     | 135.0                           | 185.6                                 |
| <b>2001-02</b>   | 107.9   | 120.3                    | 114.9                            | 123.4                    | 148.7                     | 137.6                           | 180.9                                 |
| <b>2000</b>      |   |                          |                                  |                          |                           |                                 |                                       |
| September(b)     | 107.8   | 110.1                    | 113.1                            | 117.3                    | 145.5                     | 131.8                           | 177.2                                 |
| December         | 107.9   | 116.6                    | 113.0                            | 118.8                    | 146.1                     | 135.7                           | 183.8                                 |
| <b>2001</b>      |   |                          |                                  |                          |                           |                                 |                                       |
| March            | 107.8   | 120.3                    | 116.1                            | 119.6                    | 151.6                     | 136.2                           | 193.1                                 |
| June             | 107.8   | 120.3                    | 113.9                            | 121.4                    | 148.4                     | 136.2                           | 188.1                                 |
| September        | 107.8   | 120.3                    | 113.9                            | 123.4                    | 147.1                     | 137.6                           | 183.2                                 |
| December         | 107.9   | 120.3                    | 114.4                            | 123.6                    | 147.4                     | 137.4                           | 178.1                                 |
| <b>2002</b>      |   |                          |                                  |                          |                           |                                 |                                       |
| March            | 107.9   | 120.3                    | 111.4                            | 123.3                    | 147.4                     | 137.6                           | 182.0                                 |
| June             | 107.9   | 120.3                    | 119.7                            | 123.3                    | 152.9                     | 137.9                           | 180.2                                 |
| September        | 110.3   | 120.3                    | 129.7                            | 123.2                    | 157.2                     | 140.2                           | 176.4                                 |

For footnotes see end of table

...continued

|                  | <i>All electrical materials</i> |                                      | <i>All mechanical services</i> |                                      | <i>All plumbing materials</i> |                                      |
|------------------|---------------------------------|--------------------------------------|--------------------------------|--------------------------------------|-------------------------------|--------------------------------------|
|                  | <i>Index</i>                    | <i>% change over previous period</i> | <i>Index</i>                   | <i>% change over previous period</i> | <i>Index</i>                  | <i>% change over previous period</i> |
| <b>1999–2000</b> | 117.6                           | 1.6                                  | 120.3                          | 1.1                                  | 127.0                         | 2.0                                  |
| <b>2000–01</b>   | 117.3                           | –0.3                                 | 118.2                          | –1.7                                 | 132.7                         | 4.5                                  |
| <b>2001–02</b>   | 118.5                           | 1.0                                  | 120.9                          | 2.3                                  | 132.4                         | –0.2                                 |
| <b>2000</b>      |                                 |                                      |                                |                                      |                               |                                      |
| September(b)     | 115.8                           | –2.4                                 | 117.3                          | –3.8                                 | 129.1                         | –1.5                                 |
| December         | 117.6                           | 1.6                                  | 118.0                          | 0.6                                  | 131.8                         | 2.1                                  |
| <b>2001</b>      |                                 |                                      |                                |                                      |                               |                                      |
| March            | 117.8                           | 0.2                                  | 118.4                          | 0.3                                  | 136.0                         | 3.2                                  |
| June             | 117.9                           | 0.1                                  | 119.0                          | 0.5                                  | 134.0                         | –1.5                                 |
| September        | 118.2                           | 0.3                                  | 119.8                          | 0.7                                  | 131.8                         | –1.6                                 |
| December         | 118.7                           | 0.4                                  | 120.1                          | 0.3                                  | 130.4                         | –1.1                                 |
| <b>2002</b>      |                                 |                                      |                                |                                      |                               |                                      |
| March            | 119.5                           | 0.7                                  | 121.8                          | 1.4                                  | 133.4                         | 2.3                                  |
| June             | 117.7                           | –1.5                                 | 122.0                          | 0.2                                  | 133.8                         | 0.3                                  |
| September        | 117.5                           | –0.2                                 | 122.1                          | 0.1                                  | 135.0                         | 0.9                                  |

|                  | <i>All groups excluding electrical materials and mechanical services</i> |                                      | <i>All groups</i> |                                      |
|------------------|--|--------------------------------------|-------------------|--------------------------------------|
|                  | <i>Index</i>   | <i>% change over previous period</i> | <i>Index</i>      | <i>% change over previous period</i> |
| <b>1999–2000</b> | 119.1  | 0.3                                  | 119.0             | 0.4                                  |
| <b>2000–01</b>   | 120.5  | 1.2                                  | 119.3             | 0.3                                  |
| <b>2001–02</b>   | 122.1  | 1.3                                  | 121.3             | 1.7                                  |
| <b>2000</b>      |  |                                      |                   |                                      |
| September(b)     | 118.8  | –0.8                                 | 117.9             | –1.5                                 |
| December         | 120.1  | 1.1                                  | 119.1             | 1.0                                  |
| <b>2001</b>      |  |                                      |                   |                                      |
| March            | 121.7  | 1.3                                  | 120.2             | 0.9                                  |
| June             | 121.3  | –0.3                                 | 120.1             | –0.1                                 |
| September        | 121.2  | –0.1                                 | 120.3             | 0.2                                  |
| December         | 121.2  | —                                    | 120.5             | 0.2                                  |
| <b>2002</b>      |  |                                      |                   |                                      |
| March            | 122.2  | 0.8                                  | 121.6             | 0.9                                  |
| June             | 123.8  | 1.3                                  | 122.8             | 1.0                                  |
| September        | 124.9  | 0.9                                  | 123.5             | 0.6                                  |

(a) Base year: 1989–90 = 100.

(b) This quarter affected by the removal of the Wholesale Sales Tax from 1 July 2000.

Source: ABS Data available on request; *Producer Price Index (cat. no. 6427.0)*.

|                  | <i>Dairy products(a)</i> |                          |                       | <i>Staff hours worked</i>       |                             |
|------------------|--------------------------|--------------------------|-----------------------|---------------------------------|-----------------------------|
|                  | <i>Whole milk(b)</i>     | <i>Factory butter(c)</i> | <i>Factory cheese</i> | <i>Textile manufacturing(d)</i> | <i>Vegetable preserving</i> |
|                  | <i>million litres</i>    | <i>tonnes</i>            | <i>tonnes</i>         | <i>'000</i>                     | <i>'000</i>                 |
| <b>1999–2000</b> | 608.6                    | 8 209                    | 33 344                | 1 032                           | 1 019                       |
| <b>2000–01</b>   | 589.7                    | 5 949                    | 32 355                | 938                             | 1 037                       |
| <b>2001–02</b>   | 671.4                    | 7 368                    | 35 155                | 975                             | 1 062                       |
| <b>2001</b>      |                          |                          |                       |                                 |                             |
| October          | 88.8                     | 980                      | 3 833                 | 93                              | 77                          |
| November         | 87.0                     | 1 026                    | 3 979                 | 98                              | 91                          |
| December         | 84.9                     | 1 125                    | 4 402                 | 64                              | 99                          |
| <b>2002</b>      |                          |                          |                       |                                 |                             |
| January          | 76.9                     | 1 063                    | 2 739                 | 61                              | 40                          |
| February         | 61.5                     | 527                      | 3 214                 | 88                              | 85                          |
| March            | 56.5                     | 373                      | 3 797                 | 77                              | 90                          |
| April            | 44.5                     | —                        | 2 895                 | 85                              | 108                         |
| May              | 37.4                     | 558                      | 2 609                 | 81                              | 99                          |
| June             | 24.2                     | 485                      | 1 688                 | 64                              | 93                          |
| July             | 13.8                     | n.y.a.                   | 435                   | 97                              | 103                         |
| August           | 27.3                     | n.y.a.                   | 415                   | 90                              | 83                          |
| September        | 58.5                     | n.y.a.                   | 3 770                 | 82                              | 72                          |
| October          | 82.7                     | n.y.a.                   | 2 850                 | 99                              | 82                          |

|                  | <i>Refined zinc</i> | <i>Metallurgical refining</i> | <i>Electricity</i>  |
|------------------|---------------------|-------------------------------|---------------------|
|                  | <i>'000 tonnes</i>  | <i>Index(e)</i>               | <i>million kW.h</i> |
| <b>1999–2000</b> | 231.7               | 133.2                         | 10 050              |
| <b>2000–01</b>   | 233.1               | 138.4                         | 10 150              |
| <b>2001–02</b>   | 251.7               | 140.8                         | 10 210              |
| <b>2001</b>      |                     |                               |                     |
| October          | 20.6                | 142.5                         | ..                  |
| November         | 19.4                | 137.2                         | ..                  |
| December         | 21.2                | 145.5                         | (Dec qtr) 2 470     |
| <b>2002</b>      |                     |                               |                     |
| January          | 20.6                | 144.1                         | ..                  |
| February         | 20.5                | 132.7                         | ..                  |
| March            | 21.4                | 144.5                         | (Mar qtr) 2380      |
| April            | 21.7                | 144.3                         | ..                  |
| May              | 23.7                | 150.2                         | ..                  |
| June             | 22.3                | 142.4                         | (Jun qtr) 2 650     |
| July             | 20.2                | 142.3                         | ..                  |
| August           | 20.0                | 136.7                         | ..                  |
| September        | 21.6                | 144.8                         | (Sep qtr) 2 800     |
| October          | 19.6                | 143.7                         | ..                  |

(a) Source: Australian Dairy Corporation.

(b) Includes the whole milk equivalent of farm cream intake.

(c) Includes butter equivalent of butter oil.

(d) Includes spinning, weaving and carpet making. Reported by establishments which manufacture textiles only, or manufacture clothing and textiles in the one plant.

(e) Metallurgical refining index (Base year: 1979–80 = 100.0). Output from selected establishments covering the smelting and refining of ferro-alloys, zinc and aluminium. The weighting pattern is based on the establishments' value added as derived from the 1979–80 manufacturing Census. For multi product establishments, value added was apportioned to products on the basis of gross receipts from each product.

Source: ABS data available on request; Employees Hours Worked Survey; Monthly Production Survey; Manufacturing Survey.



## 20

### LIVESTOCK SLAUGHTERING — ORIGINAL

|                  | Cattle                                |                         |               |              |              |             |
|------------------|---------------------------------------|-------------------------|---------------|--------------|--------------|-------------|
|                  | <i>Bulls, bullocks<br/>and steers</i> | <i>Cows and heifers</i> | <i>Calves</i> | <i>Sheep</i> | <i>Lambs</i> | <i>Pigs</i> |
|                  | '000                                  | '000                    | '000          | '000         | '000         | '000        |
| <b>1999–2000</b> | 109.0                                 | 108.9                   | 62.1          | 589.9        | 456.3        | 70.1        |
| <b>2000–01</b>   | 90.2                                  | 94.2                    | 49.7          | 364.7        | 416.1        | 57.6        |
| <b>2001–02</b>   | 80.6                                  | 79.4                    | 44.6          | 275.8        | 426.4        | 53.1        |
| <b>2000</b>      |                                       |                         |               |              |              |             |
| October          | 5.9                                   | 5.8                     | 5.6           | 24.3         | 32.2         | 4.1         |
| <b>2001</b>      |                                       |                         |               |              |              |             |
| October          | 5.9                                   | 6.6                     | 5.2           | 24.2         | 35.1         | 4.8         |
| November         | 7.3                                   | 6.1                     | 1.0           | 25.5         | 38.9         | 4.5         |
| December         | 6.2                                   | 5.3                     | 0.2           | 25.2         | 26.9         | 5.4         |
| <b>2002</b>      |                                       |                         |               |              |              |             |
| January          | 6.5                                   | 3.9                     | 0.1           | 23.3         | 26.2         | 2.9         |
| February         | 9.2                                   | 5.3                     | 0.1           | 24.8         | 37.3         | 3.7         |
| March            | 7.5                                   | 7.2                     | 0.2           | 25.9         | 33.5         | 4.7         |
| April            | 6.8                                   | 9.1                     | 0.7           | 21.6         | 33.5         | 4.1         |
| May              | 8.3                                   | 12.4                    | 0.8           | 30.3         | 44.9         | 5.1         |
| June             | 5.9                                   | 8.9                     | 0.5           | 26.7         | 32.3         | 4.1         |
| July             | 4.4                                   | 7.5                     | 1.2           | 21.5         | 33.8         | 4.0         |
| August           | 10.6                                  | 3.5                     | 16.7          | 17.6         | 36.0         | 4.3         |
| September        | 4.2                                   | 2.7                     | 12.6          | 15.8         | 29.1         | 3.8         |
| October          | 5.2                                   | 9.5                     | 5.2           | 18.0         | 32.6         | 3.6         |

Source: ABS data available on request; Livestock Slaughtered.

## 21

### LIVESTOCK SLAUGHTERING — SEASONALLY ADJUSTED(a) AND TREND(b)

|             | Seasonally adjusted      |                        |             | Trend                    |                        |             |
|-------------|--------------------------|------------------------|-------------|--------------------------|------------------------|-------------|
|             | <i>Cattle and calves</i> | <i>Sheep and lambs</i> | <i>Pigs</i> | <i>Cattle and calves</i> | <i>Sheep and lambs</i> | <i>Pigs</i> |
|             | '000                     | '000                   | '000        | '000                     | '000                   | '000        |
| <b>2000</b> |                          |                        |             |                          |                        |             |
| October     | 18.9                     | 71.6                   | 4.7         | 18.8                     | 68.2                   | 4.7         |
| <b>2001</b> |                          |                        |             |                          |                        |             |
| October     | 18.5                     | 69.3                   | 5.1         | 17.6                     | 67.7                   | 4.9         |
| November    | 18.1                     | 65.7                   | 5.2         | 17.1                     | 65.0                   | 4.8         |
| December    | 16.4                     | 51.1                   | 4.9         | 16.5                     | 63.0                   | 4.7         |
| <b>2002</b> |                          |                        |             |                          |                        |             |
| January     | 14.0                     | 42.8                   | 3.7         | 16.0                     | 46.1                   | 4.4         |
| February    | 15.8                     | 48.9                   | 4.2         | 15.6                     | 47.7                   | 4.2         |
| March       | 14.5                     | 47.5                   | 4.3         | 15.7                     | 51.5                   | 4.1         |
| April       | 17.0                     | 56.8                   | 4.2         | 16.0                     | 56.6                   | 4.1         |
| May         | 17.6                     | 67.8                   | 4.4         | 16.4                     | 61.3                   | 4.1         |
| June        | 15.8                     | 62.6                   | 3.6         | 16.9                     | 64.5                   | 4.1         |
| July        | 15.6                     | 65.6                   | 3.9         | 17.2                     | 66.0                   | 4.1         |
| August      | 22.3                     | 72.2                   | 4.7         | 17.6                     | 66.1                   | 4.0         |
| September   | 12.6                     | 64.3                   | 3.7         | 18.1                     | 65.6                   | 4.0         |
| October     | 21.5                     | 57.7                   | 3.8         | 18.4                     | 64.1                   | 3.9         |

(a) Seasonally adjusted factors are reviewed annually to take account of each additional year's original data. The results of the review are used to compile revised seasonally adjusted and trend estimates; see Notes page 2.

(b) ABS trend estimates for the most recent months are revised; see Notes page 2.

Source: ABS data available on request; Livestock Slaughtered.

## 22

### MEAT PRODUCTION(a)

|                  | <i>Beef</i>   | <i>Veal</i>   | <i>Mutton</i> | <i>Lamb</i>   | <i>Pig meat(b)</i> | <i>Total</i>  |
|------------------|---------------|---------------|---------------|---------------|--------------------|---------------|
|                  | <i>tonnes</i> | <i>tonnes</i> | <i>tonnes</i> | <i>tonnes</i> | <i>tonnes</i>      | <i>tonnes</i> |
| <b>1999–2000</b> | 57 557        | 1 236         | 11 796        | 8 833         | 4 403              | 83 825        |
| <b>2000–01</b>   | 48 771        | 996           | 7 232         | 8 014         | 3 583              | 68 596        |
| <b>2001–02</b>   | 43 923        | 899           | 5 416         | 8 466         | 3 159              | 61 863        |
| <b>2000</b>      |               |               |               |               |                    |               |
| October          | 3 181         | 112           | 478           | 617           | 257                | 4 646         |
| <b>2001</b>      |               |               |               |               |                    |               |
| October          | 3 401         | 100           | 475           | 687           | 296                | 4 960         |
| November         | 3 783         | 25            | 516           | 769           | 264                | 5 357         |
| December         | 3 111         | 7             | 510           | 525           | 308                | 4 460         |
| <b>2002</b>      |               |               |               |               |                    |               |
| January          | 3 071         | 4             | 458           | 517           | 175                | 4 226         |
| February         | 4 190         | 4             | 496           | 745           | 220                | 5 656         |
| March            | 3 998         | 8             | 505           | 660           | 279                | 5 449         |
| April            | 4 290         | 17            | 422           | 669           | 240                | 5 637         |
| May              | 5 542         | 18            | 579           | 906           | 295                | 7 341         |
| June             | 3 874         | 11            | 504           | 634           | 238                | 5 261         |
| July             | 2 872         | 25            | 401           | 679           | 226                | 4 203         |
| August           | 3 716         | 322           | 335           | 726           | 252                | 5 351         |
| September        | 1 967         | 244           | 304           | 591           | 222                | 3 328         |
| October          | 3 825         | 101           | 348           | 690           | 207                | 5 171         |

(a) Carcass weight.

(b) Includes pork used for production of bacon and ham.

Source: ABS data available on request; Livestock Slaughtered.

## 23

### PRINCIPAL MINERAL CONCENTRATES PRODUCED

|                  | <i>Copper</i>      | <i>Iron (pellets)</i> | <i>Lead</i>        | <i>Lead-zinc</i>   | <i>Tin</i>         | <i>Zinc</i>        |
|------------------|--------------------|-----------------------|--------------------|--------------------|--------------------|--------------------|
|                  | <i>'000 tonnes</i> | <i>'000 tonnes</i>    | <i>'000 tonnes</i> | <i>'000 tonnes</i> | <i>'000 tonnes</i> | <i>'000 tonnes</i> |
| <b>1999–2000</b> | 104.3              | 2 068.3               | 98.7               | 7.9                | 14.8               | 311.9              |
| <b>2000–01</b>   | 105.4              | 2 027.3               | 40.6               | —                  | 14.8               | 143.2              |
| <b>2001–02</b>   | 115.0              | 2 151.6               | 35.6               | —                  | 12.4               | 138.7              |
| <b>2000</b>      |                    |                       |                    |                    |                    |                    |
| September        | 21.6               | 544.2                 | 7.7                | —                  | 3.2                | 26.8               |
| December         | 24.9               | 500.7                 | 9.7                | —                  | 3.4                | 33.5               |
| <b>2001</b>      |                    |                       |                    |                    |                    |                    |
| March            | 29.3               | 534.9                 | 12.1               | —                  | 3.9                | 43.2               |
| June             | 29.5               | 447.5                 | 11.2               | —                  | 4.3                | 39.5               |
| September        | 32.5               | 487.8                 | 8.9                | —                  | 3.1                | 35.2               |
| December         | 30.9               | 554.1                 | 8.4                | —                  | 3.6                | 37.9               |
| <b>2002</b>      |                    |                       |                    |                    |                    |                    |
| March            | 28.0               | 533.5                 | 9.9                | —                  | 2.7                | 33.3               |
| June             | 23.6               | 576.3                 | 8.5                | —                  | 3.0                | 32.4               |
| September        | 34.5               | 513.1                 | 9.7                | —                  | 3.7                | 39.0               |

Source: Mineral Resources Tasmania, Department of Infrastructure, Energy and Resources.

## SAWMILLS AND PLYWOOD MILLS, LOGS DELIVERED AND TIMBER PRODUCED(a)

|                  | Tasmanian-grown logs delivered |  |                                 |                             |                     | Sawn, peeled and sliced timber produced(b) |  |                                 |                             |                     |
|------------------|--------------------------------|--|---------------------------------|-----------------------------|---------------------|--|--|---------------------------------|-----------------------------|---------------------|
|                  | <i>Eucalypts</i>               | <i>Hardwoods, excluding eucalypts(c)</i> | <i>Plant-ation(d) softwoods</i> | <i>Native soft-woods(e)</i> | <i>Total</i>        | <i>Eucalypts</i>                           | <i>Hardwoods, excluding eucalypts(c)</i> | <i>Plant-ation(d) softwoods</i> | <i>Native soft-woods(e)</i> | <i>Total</i>        |
|                  | '000 m <sup>3</sup>            | '000 m <sup>3</sup>                      | '000 m <sup>3</sup>             | '000 m <sup>3</sup>         | '000 m <sup>3</sup> | '000 m <sup>3</sup>                        | '000 m <sup>3</sup>                      | '000 m <sup>3</sup>             | '000 m <sup>3</sup>         | '000 m <sup>3</sup> |
| <b>1999-2000</b> | 510.1                          | 28.8                                     | 396.2                           | 0.9                         | 936.9               | 169.7                                      | 5.3                                      | 190.6                           | 0.4                         | 366.0               |
| <b>2000-01</b>   | 468.5                          | 24.8                                     | 369.9                           | 2.6                         | 865.8               | 157.9                                      | 6.3                                      | 174.1                           | 0.2                         | 338.6               |
| <b>2001-02</b>   | 513.9                          | 31.7                                     | 447.2                           | 0.9                         | 993.8               | 170.2                                      | 8.1                                      | 208.9                           | 0.3                         | 387.4               |
| <b>2000</b>      |                                |  |                                 |                             |                     |  |  |                                 |                             |                     |
| September        | 130.7                          | 5.0                                      | 103.8                           | 0.3                         | 239.9               | 42.4                                       | 1.7                                      | 46.6                            | 0.1                         | 90.9                |
| December         | 118.1                          | 4.3                                      | 82.7                            | 0.2                         | 205.2               | 41.6                                       | 1.3                                      | 41.4                            | —                           | 84.3                |
| <b>2001</b>      |                                |  |                                 |                             |                     |  |  |                                 |                             |                     |
| March            | 105.3                          | 6.7                                      | 91.9                            | 1.8                         | 205.6               | 37.2                                       | 1.5                                      | 42.4                            | 0.1                         | 81.2                |
| June             | 116.3                          | 8.8                                      | 91.5                            | 0.2                         | 216.9               | 37.4                                       | 1.8                                      | 43.6                            | —                           | 82.9                |
| September        | 129.8                          | 5.6                                      | 115.9                           | 0.1                         | 251.4               | 42.1                                       | 1.8                                      | 50.9                            | 0.1                         | 95.0                |
| December         | 115.0                          | 8.9                                      | 94.3                            | 0.1                         | 218.4               | 37.8                                       | 2.2                                      | 48.4                            | 0.1                         | 88.3                |
| <b>2002</b>      |                                |  |                                 |                             |                     |  |  |                                 |                             |                     |
| March            | 116.2                          | 10.3                                     | 121.6                           | 0.3                         | 248.5               | 41.6                                       | 2.7                                      | 53.6                            | 0.1                         | 97.9                |
| June             | 152.8                          | 6.9                                      | 115.4                           | 0.3                         | 275.4               | 48.7                                       | 1.4                                      | 56.0                            | 0.1                         | 106.2               |
| September        | 143.4                          | 5.4                                      | 122.3                           | 0.2                         | 271.3               | 44.7                                       | 1.4                                      | 58.8                            | 0.1                         | 105.0               |

(a) Separate data for logs delivered and sourced from Crown and Private land is available on request.

(b) Includes plywood, veneer and sliced timber production converted to an equivalent cubic measurement.

(c) Includes blackwood, myrtle, sassafras etc.

(d) Radiata pine.

(e) Includes Huon pine, Celery Top pine and King William pine.

Source: ABS data available on request, Forest Products Survey.

Value(e)

|                  | Dwelling units |                                    |  |                      | Non-residential buildings(d) |   |         | Total of all building |       |
|------------------|----------------|------------------------------------|--|----------------------|------------------------------|---|---------|-----------------------|-------|
|                  | New houses     | New other residential buildings(a) | Other dwelling units created (conversions etc.)(b) | Total dwelling units | New dwelling units           | Alterations and additions to residential buildings(c) | Private |                       | Total |
|                  | no.            | no.                                | no.  | no.                  | \$m                          | \$m   | \$m     |                       | \$m   |
| <b>1999–2000</b> | 1 608          | 230                                | 55   | 1 893                | 193.4                        | 50.7  | 120.7   | 160.6                 | 404.7 |
| <b>2000–01</b>   | 1 108          | 80                                 | 10   | 1 198                | 127.5                        | 43.1  | 95.2    | 152.5                 | 323.0 |
| <b>2001–02</b>   | 1 878          | 141                                | 13   | 2 032                | 221.0                        | 51.7  | 113.6   | 168.0                 | 440.7 |
| <b>2001</b>      |                |                                    |  |                      |                              |   |         |                       |       |
| October          | 165            | 4                                  | 1  | 170                  | 18.1                         | 4.4   | 24.3    | 29.0                  | 51.4  |
| November         | 169            | —                                  | 1  | 170                  | 18.6                         | 5.3   | 7.5     | 12.0                  | 35.9  |
| December         | 156            | 2                                  | 2  | 160                  | 15.9                         | 3.3   | 6.4     | 27.4                  | 46.6  |
| <b>2002</b>      |                |                                    |  |                      |                              |   |         |                       |       |
| January          | 223            | 60                                 | 1  | 284                  | 30.2                         | 3.7   | 6.1     | 8.2                   | 42.0  |
| February         | 140            | 4                                  | 3  | 147                  | 15.6                         | 4.0   | 8.5     | 11.8                  | 31.5  |
| March            | 162            | 1                                  | —  | 163                  | 19.2                         | 4.6   | 10.3    | 15.2                  | 39.1  |
| April            | 137            | 7                                  | —  | 144                  | 15.4                         | 3.3   | 4.1     | 7.0                   | 25.7  |
| May              | 161            | 4                                  | —  | 165                  | 19.8                         | 4.6   | 11.3    | 11.6                  | 36.0  |
| June             | 164            | 6                                  | 2  | 172                  | 17.8                         | 3.9   | 6.1     | 14.0                  | 35.7  |
| July             | 175            | 4                                  | 1  | 180                  | 22.0                         | 5.0   | 25.9    | 27.7                  | 54.7  |
| August           | 172            | 4                                  | 1  | 177                  | 21.7                         | 5.4   | 8.1     | 9.1                   | 36.1  |
| September        | 172            | 6                                  | —  | 178                  | 20.8                         | 4.3   | 7.6     | 9.9                   | 35.1  |
| October          | 152            | 19                                 | 2  | 173                  | 18.8                         | 6.2   | 8.5     | 10.3                  | 35.3  |

(a) New individual dwelling units (e.g. flats, home units and villa units).

(b) From alterations and additions to residential building, conversions of non-residential building to residential building etc.

(c) Valued at \$10,000 and over. Includes conversions and dwelling units approved as part of alterations and additions or as part of the construction of non-residential building.

(d) Comprises non-residential building (new plus alterations and additions) valued at \$50,000 and over.

(e) Value data from July 2000 reference month onward are recorded inclusive of GST. See *Building Approvals, Australia* (cat. no. 8731.0) or page 2 of this publication for more details.

Source: *Building Approvals, Australia* (cat. no. 8731.0).

|             | <i>Total number of dwellings(a)</i> |                               |                 | <i>Total value of commitments(b)</i> |                               |                 |
|-------------|-------------------------------------|-------------------------------|-----------------|--------------------------------------|-------------------------------|-----------------|
|             | <i>Original</i>                     | <i>Seasonally adjusted(c)</i> | <i>Trend(c)</i> | <i>Original</i>                      | <i>Seasonally adjusted(c)</i> | <i>Trend(c)</i> |
|             | <i>no.</i>                          | <i>no.</i>                    | <i>no.</i>      | <i>\$m</i>                           | <i>\$m</i>                    | <i>\$m</i>      |
| <b>2001</b> |                                     |                               |                 |                                      |                               |                 |
| October     | 1 070                               | 1 020                         | 1 053           | 91                                   | 87                            | 87              |
| November    | 1 181                               | 1 108                         | 1 085           | 99                                   | 91                            | 90              |
| December    | 1 080                               | 1 142                         | 1 105           | 89                                   | 90                            | 92              |
| <b>2002</b> |                                     |                               |                 |                                      |                               |                 |
| January     | 1 080                               | 1 228                         | 1 110           | 93                                   | 115                           | 92              |
| February    | 1 078                               | 1 083                         | 1 102           | 94                                   | 94                            | 93              |
| March       | 1 091                               | 1 098                         | 1 092           | 93                                   | 93                            | 93              |
| April       | 1 005                               | 1 011                         | 1 083           | 87                                   | 89                            | 93              |
| May         | 1 303                               | 1 113                         | 1 082           | 108                                  | 95                            | 93              |
| June        | 1 022                               | 1 097                         | 1 086           | 88                                   | 96                            | 94              |
| July        | 1 115                               | 1 117                         | 1 092           | 98                                   | 94                            | 95              |
| August      | 1 114                               | 1 076                         | 1 094           | 98                                   | 94                            | 96              |
| September   | 990                                 | 1 076                         | 1 095           | 91                                   | 96                            | 97              |
| October     | 1 162                               | 1 107                         | 1 098           | 106                                  | 103                           | 99              |

(a) Includes new dwellings, established dwellings and refinancing. Excludes alterations and additions.

(b) Commitment is a firm offer of housing finance. It either has been, or is normally expected to be, accepted. Includes commitments to provide housing finance to employees and commitments accepted and cancelled in the same month. Excludes alterations and additions. Includes refinancing.

(c) New seasonal factors have been incorporated, resulting in revisions to all seasonally adjusted and trend series.

Source: *Housing Finance for Owner Occupation, Australia (cat. no. 5609.0)*.

|                    | Asset                           |                                       |                    | Industry      |                      |                                  |                             |
|--------------------|---------------------------------|---------------------------------------|--------------------|---------------|----------------------|----------------------------------|-----------------------------|
|                    | <i>Buildings and structures</i> | <i>Equipment, plant and machinery</i> | <i>Total asset</i> | <i>Mining</i> | <i>Manufacturing</i> | <i>Other selected industries</i> | <i>Total all industries</i> |
|                    | \$m                             | \$m                                   | \$m                | \$m           | \$m                  | \$m                              | \$m                         |
| <b>1999–2000 r</b> | 97                              | 411                                   | 508                | 54            | 135                  | 319                              | 508                         |
| <b>2000–01 r</b>   | 133                             | 467                                   | 600                | 87            | 162                  | 352                              | 600                         |
| <b>2001–02 r</b>   | 445                             | 518                                   | 963                | 57            | 154                  | 752                              | 963                         |
| <b>2000</b>        |                                 |                                       |                    |               |                      |                                  |                             |
| September r        | 39                              | 109                                   | 148                | 35            | 37                   | 76                               | 148                         |
| December r         | 34                              | 126                                   | 161                | 15            | 42                   | 104                              | 161                         |
| <b>2001</b>        |                                 |                                       |                    |               |                      |                                  |                             |
| March r            | 32                              | 95                                    | 127                | 12            | 33                   | 83                               | 127                         |
| June r             | 28                              | 136                                   | 164                | 25            | 50                   | 89                               | 164                         |
| September r        | 67                              | 122                                   | 189                | 15            | 41                   | 134                              | 189                         |
| December r         | 103                             | 107                                   | 210                | 11            | 42                   | 157                              | 210                         |
| <b>2002</b>        |                                 |                                       |                    |               |                      |                                  |                             |
| March r            | 136                             | 120                                   | 256                | 17            | 36                   | 203                              | 256                         |
| June r             | 138                             | 169                                   | 307                | 14            | 35                   | 258                              | 307                         |
| September          | 88                              | 112                                   | 200                | 9             | 34                   | 157                              | 200                         |

(a) Estimates based on a sample survey and therefore subject to sampling variability. Covers selected industries only — mining, manufacturing, and other selected industries.

(b) Current prices.

(c) See *Private New Capital Expenditure and Expected Expenditure* (cat. no. 5625.0) or page 2 of this issue on the impacts of The New Tax System (TNTS) introduced on 1 July 2000.

(d) There have been significant revisions to all data contained in this issue. For more information see "Revisions in this Issue" on pages 3 and 4 of *Private New Capital Expenditure and Expected Expenditure, September Quarter 2002* (cat. no. 5625.0).

Source: *Private New Capital Expenditure and Expected Expenditure* (cat. no. 5625.0).

|  | <i>Establish-<br/>ments</i> | <i>Guest<br/>rooms</i> | <i>Bed<br/>spaces</i> | <i>Persons<br/>employed</i> | <i>Room<br/>nights<br/>occupied</i> | <i>Room<br/>occupancy<br/>rate</i> | <i>Guest<br/>nights</i> | <i>Bed<br/>occupancy<br/>rate</i> | <i>Guest<br/>arrivals</i> | <i>Takings from<br/>accommodation(b)</i> |
|--|-----------------------------|------------------------|-----------------------|-----------------------------|-------------------------------------|------------------------------------|-------------------------|-----------------------------------|---------------------------|--|
|  | <i>no.</i>                  | <i>no.</i>             | <i>no.</i>            | <i>no.</i>                  | <i>'000</i>                         | <i>%</i>                           | <i>'000</i>             | <i>%</i>                          | <i>'000</i>               | <i>\$'000</i>                            |
| <b>LICENSED HOTELS WITH FACILITIES</b>         |                             |                        |                       |                             |                                     |                                    |                         |                                   |                           |  |
| <b>2001</b>                                    |                             |                        |                       |                             |                                     |                                    |                         |                                   |                           |  |
| June qtr                                       | 54                          | 2 913                  | 8 046                 | 2 751                       | 118.9                               | 44.9                               | 192.4                   | 26.3                              | 104.9                     | 11 301                                   |
| <b>2002</b>                                    |                             |                        |                       |                             |                                     |                                    |                         |                                   |                           |  |
| April  | n.a.                        | n.a.                   | n.a.                  | n.a.                        | 47.3                                | 54.8                               | 77.2                    | 32.3                              | 43.6                      | 4 297                                    |
| May  | n.a.                        | n.a.                   | n.a.                  | n.a.                        | 43.6                                | 48.8                               | 64.1                    | 26.0                              | 35.5                      | 3 965                                    |
| June   | n.a.                        | n.a.                   | n.a.                  | n.a.                        | 33.5                                | 38.7                               | 51.9                    | 21.7                              | 28.6                      | 2 876                                    |
| June qtr                                       | 52                          | 2 879                  | 7 964                 | 2 676                       | 124.3                               | 47.5                               | 193.2                   | 26.7                              | 107.8                     | 11 139                                   |
| <b>MOTELS AND GUEST HOUSES WITH FACILITIES</b> |                             |                        |                       |                             |                                     |                                    |                         |                                   |                           |  |
| <b>2001</b>                                    |                             |                        |                       |                             |                                     |                                    |                         |                                   |                           |  |
| June qtr                                       | 50                          | 1 684                  | 5 241                 | 627                         | 68.8                                | 44.9                               | 130.5                   | 27.4                              | 72.7                      | 6 057                                    |
| <b>2002</b>                                    |                             |                        |                       |                             |                                     |                                    |                         |                                   |                           |  |
| April  | n.a.                        | n.a.                   | n.a.                  | n.a.                        | 29.0                                | 58.8                               | 53.4                    | 35.3                              | 30.3                      | 2 551                                    |
| May  | n.a.                        | n.a.                   | n.a.                  | n.a.                        | 24.1                                | 47.3                               | 42.1                    | 26.8                              | 22.8                      | 2 036                                    |
| June   | n.a.                        | n.a.                   | n.a.                  | n.a.                        | 16.6                                | 33.6                               | 30.2                    | 19.9                              | 16.4                      | 1 419                                    |
| June qtr                                       | 49                          | 1 648                  | 5 061                 | 628                         | 69.7                                | 46.5                               | 125.7                   | 27.3                              | 69.5                      | 6 006                                    |
| <b>SERVICED APARTMENTS</b>                     |                             |                        |                       |                             |                                     |                                    |                         |                                   |                           |  |
| <b>2001</b>                                    |                             |                        |                       |                             |                                     |                                    |                         |                                   |                           |  |
| June qtr                                       | 25                          | 881                    | 3 219                 | 418                         | 39.6                                | 49.4                               | 85.5                    | 29.2                              | 37.5                      | 4 398                                    |
| <b>2002</b>                                    |                             |                        |                       |                             |                                     |                                    |                         |                                   |                           |  |
| April  | n.a.                        | n.a.                   | n.a.                  | n.a.                        | 19.1                                | 61.7                               | 42.0                    | 39.5                              | 18.1                      | 2 159                                    |
| May  | n.a.                        | n.a.                   | n.a.                  | n.a.                        | 14.9                                | 46.5                               | 28.2                    | 25.7                              | 12.8                      | 1 699                                    |
| June   | n.a.                        | n.a.                   | n.a.                  | n.a.                        | 12.1                                | 39.2                               | 25.8                    | 24.3                              | 10.7                      | 1 296                                    |
| June qtr                                       | 26                          | 1 030                  | 3 544                 | 481                         | 46.0                                | 49.1                               | 96.0                    | 29.8                              | 41.6                      | 5 153                                    |
| <b>TOTAL ESTABLISHMENTS</b>                    |                             |                        |                       |                             |                                     |                                    |                         |                                   |                           |  |
| <b>2001</b>                                    |                             |                        |                       |                             |                                     |                                    |                         |                                   |                           |  |
| June qtr                                       | 129                         | 5 478                  | 16 506                | 3 796                       | 227.3                               | 45.6                               | 408.4                   | 27.2                              | 215.2                     | 21 755                                   |
| <b>2002</b>                                    |                             |                        |                       |                             |                                     |                                    |                         |                                   |                           |  |
| April  | n.a.                        | n.a.                   | n.a.                  | n.a.                        | 95.3                                | 57.2                               | 172.6                   | 34.8                              | 92.1                      | 9 006                                    |
| May  | n.a.                        | n.a.                   | n.a.                  | n.a.                        | 82.6                                | 47.9                               | 134.5                   | 26.2                              | 71.2                      | 7 701                                    |
| June   | n.a.                        | n.a.                   | n.a.                  | n.a.                        | 62.2                                | 37.3                               | 108.0                   | 21.7                              | 55.6                      | 5 591                                    |
| June qtr                                       | 127                         | 5 557                  | 16 569                | 3 785                       | 240.1                               | 47.5                               | 415.0                   | 27.5                              | 218.8                     | 22 298                                   |

(a) Comprising establishments with 15 or more rooms or units. For explanation of terms and concepts refer to *Tourist Accommodation, Australia* (cat. no. 8635.0).

(b) 'Takings from accommodation' after 1 July 2000 are recorded inclusive of GST. See *Tourist Accommodation, Australia* (cat. no. 8635.0) or page 2 of this publication for more details.

Source: *Tourist Accommodation, Australia* (cat. no. 8635.0). For more detailed information, see *Tourist Accommodation, Small Area Data, Tasmania* (cat. no. 8635.6.40.001).

## Tasmanian National Park attendance

|                  | <i>Cradle<br/>Mountain(b)</i><br><i>(Lake Dove)</i> | <i>Lake<br/>St Clair(b)</i><br><i>(Cynthia Bay)</i> | <i>Mt Field(b)</i> | <i>Freycinet(c)</i> | <i>Narawntapu(d)</i><br><i>(Bakers Beach)</i> | <i>Mole Creek<br/>Karst(e)</i><br><i>(Marakoopa<br/>Cave)</i> | <i>Maria<br/>Island(f)</i><br><i>(Darlington)</i> |
|------------------|---|---|--------------------|---------------------|---|---|---|
|                  | <i>no.</i>  | <i>no.</i>  | <i>no.</i>         | <i>no.</i>          | <i>no.</i>                                    | <i>no.</i>  | <i>no.</i>  |
| <b>1999–2000</b> | 182 100   | 111 600   | 130 700            | 291 000             | 33 500  | 29 460  | 13 213  |
| <b>2000–01</b>   | 168 700   | 111 800   | 138 700            | 273 000             | 34 300  | 26 788  | 12 820  |
| <b>2001–02</b>   | 178 600   | 107 800   | 133 900            | 273 300             | 35 800  | 26 103  | 12 598  |
| <b>2001</b>      |   |   |                    |                     |   |   |   |
| November         | 15 000  | 8 700   | 9 800              | 23 400              | 3 400   | 2 041   | 946   |
| December         | 20 100  | 10 900  | 15 200             | 34 700              | 4 200   | 3 647   | 1 367   |
| <b>2002</b>      |   |   |                    |                     |   |   |   |
| January          | 31 300  | 19 200  | 24 100             | 49 000              | 6 700   | 4 458   | 2 104   |
| February         | 21 400  | 14 200  | 15 900             | 35 300              | 4 000   | 2 235   | 1 782   |
| March            | 21 400  | 16 400  | 15 700             | 34 400              | 5 000   | 2 444   | 2 025   |
| April            | 20 000  | 12 100  | 12 900             | 24 700              | 2 500   | 2 380   | 1 222   |
| May              | 9 100   | 5 000   | 6 800              | 12 500              | 1 300   | 998   | 616   |
| June             | 7 100   | 3 400   | 4 700              | 8 500               | 1 500   | 1 345   | 451   |
| July             | 6 500   | 3 100   | 5 500              | p 11 400            | 1 500   | 1 079   | 176   |
| August           | 6 800   | 2 600   | 5 200              | p 13 700            | 1 700   | 772   | 754   |
| September        | 11 300  | 5 900   | 9 100              | p 16 500            | 1 700   | 1 505   | 750   |
| October          | 14 300  | 10 300  | 9 800              | p 19 500            | 2 400   | 2 328   | 983   |
| November         | 17 200  | 12 300  | 12 000             | p 27 100            | 4 200   | n.y.a.  | 1 509   |

(a) A 'person entry' occurs whenever a visitor enters a National Park. Freycinet data, in particular, reflects repeat entries. Measurement occurs at the designated sites in brackets.

(b) Estimated through a combination of traffic and booth counts.

(c) As of July 2002, estimates of person entries is derived using traffic counts only. As a result, pre and post-July 2002 data are not strictly comparable.

(d) Estimated through traffic counts.

(e) Number of people taken on a guided tour.

(f) The sum of ferry arrivals only. From July 2000, excludes estimated plane passengers.

Source: *Tasmanian Parks and Wildlife Service, Department of Primary Industries, Water and Environment.*



|                  | <i>Overland(b)</i> | <i>South Coast(c)</i> | <i>Freycinet(d)</i> | <i>Port Davey(c)</i> | <i>Frenchmans Cap</i> |
|------------------|--------------------|-----------------------|---------------------|----------------------|-----------------------|
|                  | <i>no.</i>         | <i>no.</i>            | <i>no.</i>          | <i>no.</i>           | <i>no.</i>            |
| <b>1999–2000</b> | 7 240              | 1 011                 | 2 784               | 272                  | 807                   |
| <b>2000–01</b>   | 7 273              | 915                   | 3 002               | 208                  | 753                   |
| <b>2001–02</b>   | 7 537              | r 1 099               | 3 512               | r 229                | 644                   |
| <b>2001</b>      |                    |                       |                     |                      |                       |
| November         | 731                | 71                    | 353                 | 40                   | 25                    |
| December         | 1 288              | 231                   | 236                 | 29                   | 122                   |
| <b>2002</b>      |                    |                       |                     |                      |                       |
| January          | 1 358              | r 321                 | 807                 | r 54                 | 129                   |
| February         | 1 346              | r 215                 | 359                 | r 63                 | 101                   |
| March            | 1 319              | r 162                 | 446                 | r 21                 | 101                   |
| April            | 794                | r 58                  | 273                 | r 9                  | 109                   |
| May              | 147                | 5                     | 307                 | 1                    | 22                    |
| June             | 79                 | 2                     | 152                 | 1                    | 20                    |
| July             | p 36               | 1                     | 122                 | —                    | 2                     |
| August           | p 45               | —                     | 47                  | —                    | 13                    |
| September        | p 143              | p 26                  | 205                 | p —                  | 12                    |
| October          | p 220              | p 11                  | 128                 | p —                  | 7                     |
| November         | p 633              | p 61                  | 466                 | p 10                 | 130                   |

(a) Numbers include only walkers who registered and represented their intention.

(b) Sum of registrations at Cradle Mt and Lake St Clair.

(c) Sum of registrations to walk the length of the track in any direction, irrespective of starting point.

(d) All overnight walkers registered in the park.

Source: *Tasmanian Parks and Wildlife Service, Department of Primary Industries, Water and Environment.*

|                  | Passenger vehicles | Other vehicles | Total  | Change from corresponding<br>month of previous year |
|------------------|--------------------|----------------|--------|---|
|                  | no.                | no.            | no.    | %   |
| ORIGINAL         |                    |                |        |   |
| <b>1999–2000</b> | 9 236              | 4 708          | 13 944 | ..  |
| <b>2000–01</b>   | 9 944              | 4 693          | 14 637 | ..  |
| <b>2001–02</b>   | 9 467              | 5 295          | 14 762 | ..  |
| <b>2001</b>      |                    |                |        |   |
| October          | 851                | 406            | 1 257  | 6.6   |
| November         | 951                | 476            | 1 427  | 11.5  |
| December         | 1 424              | 449            | 1 873  | -2.7  |
| <b>2002</b>      |                    |                |        |   |
| January          | 645                | 344            | 989    | 3.7   |
| February         | 677                | 413            | 1 090  | 3.1   |
| March            | 636                | 457            | 1 093  | -7.8  |
| April            | 672                | 431            | 1 103  | 20.7  |
| May              | 737                | 606            | 1 343  | 18.0  |
| June             | 673                | 621            | 1 294  | 10.0  |
| July             | 709                | 465            | 1 174  | 9.5   |
| August           | 785                | 526            | 1 311  | 11.4  |
| September        | 756                | 483            | 1 239  | 18.7  |
| October          | 707                | 496            | 1 203  | -4.3  |
| TREND            |                    |                |        |   |
| <b>1999–2000</b> | 9 227              | 4 720          | 13 947 | ..  |
| <b>2000–01</b>   | 9 803              | 4 694          | 14 497 | ..  |
| <b>2001–02</b>   | 9 539              | 5 268          | 14 807 | ..  |
| <b>2001</b>      |                    |                |        |   |
| October          | 795                | 419            | 1 214  | -2.7  |
| November         | 832                | 435            | 1 267  | —   |
| December         | 854                | 448            | 1 302  | 2.4   |
| <b>2002</b>      |                    |                |        |   |
| January          | 858                | 456            | 1 314  | 3.8   |
| February         | 846                | 460            | 1 306  | 4.4   |
| March            | 825                | 461            | 1 286  | 5.4   |
| April            | 802                | 465            | 1 267  | 7.6   |
| May              | 780                | 475            | 1 255  | 10.9  |
| June             | 758                | 488            | 1 246  | 13.4  |
| July             | 738                | 501            | 1 239  | 13.8  |
| August           | 718                | 512            | 1 230  | 11.1  |
| September        | 703                | 520            | 1 223  | 6.0   |
| October          | 686                | 525            | 1 211  | -0.2  |

(a) This table is new and replaces the Registration of New Motor Vehicles table. The Australian Bureau of Statistics is no longer collecting and disseminating statistics relating to the registration of new motor vehicles. For more information please refer to the paper *Developments in New Motor Vehicle Statistics, 2001* (cat. no. 9313.0).

Source: Sales of New Motor Vehicles (cat. no. 9314.0.55.001).

|                  |          |                |                                  |                          |                             |                          |         | <i>Trend</i>                                      |  |
|------------------|----------|----------------|----------------------------------|--------------------------|-----------------------------|--------------------------|---------|---|--|
|                  |          |                |                                  |                          |                             |                          |         | <i>Total(d)</i>                                   |  |
|                  | Original | Food retailing | Clothing and soft good retailing | Household good retailing | Recreational good retailing | Hospitality and services |         | Change from corresponding period of previous year |  |
|                  | \$m      | \$m            | \$m                              | \$m                      | \$m                         | \$m                      | \$m     | %   |  |
| <b>1999-2000</b> | 3 062.9  | 1 325.5        | 168.1                            | 403.2                    | 180.4                       | 364.8                    | 3 036.4 | 1.8   |  |
| <b>2000-01</b>   | 3 210.8  | 1 401.0        | 178.8                            | 479.9                    | 180.9                       | 371.3                    | 3 218.4 | 6.0   |  |
| <b>2001-02</b>   | 3 375.9  | 1 448.6        | 215.9                            | 519.9                    | 193.1                       | 359.0                    | 3 379.8 | 5.0   |  |
| <b>2001</b>      |          |                |                                  |                          |                             |                          |         |   |  |
| October          | 273.5    | 119.1          | 17.4                             | 41.3                     | 15.9                        | 30.0                     | 275.6   | 4.5   |  |
| November         | 293.3    | 118.8          | 18.0                             | 42.1                     | 16.1                        | 29.8                     | 277.8   | 4.4   |  |
| December         | 359.1    | 119.1          | 18.5                             | 42.9                     | 16.3                        | 29.5                     | 280.1   | 4.3   |  |
| <b>2002</b>      |          |                |                                  |                          |                             |                          |         |   |  |
| January          | 285.6    | 119.9          | 18.8                             | 43.7                     | 16.4                        | 29.1                     | 282.5   | 4.2   |  |
| February         | 259.6    | 121.0          | 19.0                             | 44.4                     | 16.5                        | 28.9                     | 284.9   | 4.4   |  |
| March            | 289.1    | 122.2          | 19.0                             | 45.1                     | 16.5                        | 29.0                     | 287.3   | 4.9   |  |
| April            | 277.2    | 122.9          | 18.9                             | 45.8                     | 16.4                        | 29.4                     | 289.4   | 5.5   |  |
| May              | 292.4    | 122.9          | 18.6                             | 46.4                     | 16.3                        | 30.0                     | 291.0   | 6.3   |  |
| June             | 275.0    | 122.4          | 18.1                             | 47.0                     | 16.2                        | 30.8                     | 292.0   | 6.9   |  |
| July             | 272.2    | 121.9          | 17.6                             | 47.4                     | 16.0                        | 31.6                     | 292.6   | 7.3   |  |
| August           | 281.0    | 121.3          | 17.0                             | 47.6                     | 15.9                        | 32.3                     | 292.8   | 7.4   |  |
| September        | 269.6    | 120.8          | 16.4                             | 47.8                     | 15.6                        | 32.8                     | 292.9   | 7.0   |  |
| October          | 297.9    | 120.4          | 15.9                             | 47.8                     | 15.5                        | 33.2                     | 292.9   | 6.3   |  |

(a) Excludes motor vehicles, parts, petrol, etc.

(b) ABS retail seasonally adjusted and trend estimates for earlier periods are revised each month. See *Retail Trade, Australia* (cat. no. 8501.0) for more details.

(c) Data from July 2000 reference month onwards are recorded inclusive of GST. See *Retail Trade, Australia* (cat. no. 8501.0) and page 2 of this publication for more details. A break in the trend series occurred between June and July 2000 because of the impact of The New Tax System on retail turnover.

(d) Includes Department stores and Other retailing.

Source: *Retail Trade, Australia* (cat. no. 8501.0).

|                  | Tasmania |   |         |   | Australia |   |            |   |
|------------------|----------|---|---------|---|-----------|---|------------|---|
|                  | Imports  | Imports<br>change over<br>preceding<br>period | Exports | Exports<br>change over<br>preceding<br>period | Imports   | Imports<br>change over<br>preceding<br>period | Exports(b) | Exports<br>change over<br>preceding<br>period |
|                  | \$m      | %   | \$m     | %   | \$m       | %   | \$m        | %   |
| <b>1999-2000</b> | 440      | 8   | 2 215   | 10  | 110 078   | 13  | 97 286     | 13  |
| <b>2000-01</b>   | 524      | 19  | 2 435   | 10  | 118 317   | 7   | 119 539    | 23  |
| <b>2001-02</b>   | 518      | -1  | r 2 388 | -2  | r 119 649 | 1   | r 121 106  | 1   |
| <b>2001</b>      |          |   |         |   |           |   |            |   |
| October          | 44       | 21  | 202     | 19  | 11 519    | 19  | 10 794     | 2   |
| November         | 52       | 17  | 185     | -9  | 10 482    | -9  | 10 122     | -6  |
| December         | 50       | -3  | 190     | 3   | 9 138     | -13   | 10 189     | 1   |
| <b>2002</b>      |          |   |         |   |           |   |            |   |
| January          | 69       | 38  | 178     | -7  | 9 346     | 2   | 8 963      | -12   |
| February         | 42       | -39   | 147     | -17   | 9 617     | 3   | r 9 301    | 4   |
| March            | 29       | -32   | 254     | 72  | 9 609     | —   | r 10 449   | 12  |
| April            | 32       | 11  | 278     | 9   | 10 154    | 6   | r 9 784    | -6  |
| May              | 46       | 46  | 196     | -29   | r 10 141  | —   | r 10 015   | 2   |
| June             | 34       | -27   | 196     | —   | 9 618     | -5  | r 9 807    | -2  |
| July             | 322      | r 854   | 193     | r -1  | r 11 303  | 18  | r 10 109   | 3   |
| August           | 48       | -85   | r 225   | r 17  | r 11 387  | 1   | r 10 282   | 2   |
| September        | 44       | -9  | r 185   | -18   | 10 841    | -5  | r 9 927    | -3  |
| October          | 41       | -7  | 176     | -5  | 11 884    | 10  | 10 455     | 5   |

(a) It is difficult to get a complete picture of Tasmania's trade performance as imports recorded by the ABS include only goods imported directly into the state from overseas, and reported by the Australian Customs Service. Many of Tasmania's goods imported for direct consumption, or input into further processing industries, arrive via interstate ports, and are not included in this table.

(b) Includes re-exports.

Source: ABS data available on request, *International Trade*.

|                  | European Community       |                |                          | East Asia |          |          |           |           | Total all countries |
|------------------|--------------------------|----------------|--------------------------|-----------|----------|----------|-----------|-----------|---------------------|
|                  | United States of America | United Kingdom | Total European Community | Japan     | Korea    | Taiwan   | Hong Kong | ASEAN(a)  |                     |
|                  | \$'000                   | \$'000         | \$'000                   | \$'000    | \$'000   | \$'000   | \$'000    | \$'000    |                     |
| <b>1999–2000</b> | 202 831                  | 19 228         | 309 082                  | 489 037   | 133 553  | 207 233  | 201 348   | 383 690   | 2 214 523           |
| <b>2000–01</b>   | 229 841                  | 37 169         | 154 043                  | 573 314   | 183 972  | 214 042  | 252 793   | 390 642   | 2 435 416           |
| <b>2001–02</b>   | r 295 302                | r 35 581       | r 129 104                | 547 903   | 223 208  | 153 819  | r 263 291 | r 347 321 | r 2 387 685         |
| <b>2001</b>      |                          |                |                          |           |          |          |           |           |                     |
| October          | 24 307                   | 420            | 4 445                    | 60 304    | 20 206   | 14 927   | 15 957    | 30 841    | 202 475             |
| November         | 24 659                   | 6 257          | 13 630                   | 44 470    | 11 887   | 10 851   | 27 104    | 23 947    | 184 916             |
| December         | 37 009                   | 2 177          | 7 653                    | 41 625    | 6 856    | 12 471   | 24 656    | 30 445    | 190 126             |
| <b>2002</b>      |                          |                |                          |           |          |          |           |           |                     |
| January          | 11 037                   | 1 271          | 4 413                    | 43 070    | 30 788   | 11 764   | 19 866    | 29 429    | 177 700             |
| February         | r 9 413                  | 4 639          | r 16 833                 | 47 680    | 8 385    | 5 908    | r 16 907  | 20 826    | r 147 424           |
| March            | r 41 609                 | r 1 905        | r 16 179                 | 48 444    | 49 124   | 12 676   | r 23 883  | r 29 566  | r 254 192           |
| April            | r 14 823                 | r 5 695        | r 21 262                 | 35 728    | 29 027   | 15 430   | r 17 935  | 37 481    | r 278 101           |
| May              | 25 370                   | r 3 609        | r 12 306                 | 45 846    | 13 477   | 9 788    | r 26 904  | r 23 856  | r 196 135           |
| June             | r 23 373                 | r 2 619        | r 6 520                  | 51 516    | 19 505   | 20 428   | r 24 142  | r 25 954  | r 195 572           |
| July             | 15 342                   | 4 050          | 16 009                   | r 39 030  | r 23 290 | r 14 407 | r 21 526  | r 28 574  | r 192 872           |
| August           | 17 347                   | 3 163          | 8 832                    | r 60 185  | r 20 287 | r 17 087 | r 36 154  | r 30 556  | r 225 323           |
| September        | r 9 912                  | r 4 158        | r 16 401                 | r 41 841  | r 24 174 | r 9 507  | r 28 525  | r 25 093  | r 185 219           |
| October          | 14 263                   | 1 147          | 9 168                    | 53 622    | 19 623   | 10 862   | 11 316    | 29 011    | 176 195             |

(a) ASEAN member countries are: Brunei, Cambodia, Indonesia, Laos, Malaysia, Myanmar, Philippines, Singapore, Thailand and Viet Nam.

Source: ABS Data available on request, International Trade.

|                  | <i>Meat and meat preparations</i> | <i>Dairy product &amp; eggs</i> | <i>Fish, crustaceans and molluscs</i> | <i>Vegetables and fruit</i> | <i>Wood and woodchips(a)</i> | <i>Textile fibres and wastes</i> | <i>Metallic ores and metal scrap</i> |
|------------------|-----------------------------------|---------------------------------|---------------------------------------|-----------------------------|------------------------------|----------------------------------|--------------------------------------|
|                  | \$'000                            | \$'000                          | \$'000                                | \$'000                      | \$'000                       | \$'000                           | \$'000                               |
| <b>1999–2000</b> | 88 298                            | 64 573                          | 145 484                               | 44 689                      | 303 340                      | 22 358                           | 242 584                              |
| <b>2000–01</b>   | 88 773                            | 101 006                         | 176 737                               | 49 788                      | 31 816                       | 21 248                           | 242 366                              |
| <b>2001–02</b>   | 75 541                            | 114 682                         | 174 885                               | r 60 638                    | 43 788                       | 23 797                           | r 188 273                            |
| <b>2001</b>      |                                   |                                 |                                       |                             |                              |                                  |                                      |
| October          | 7 229                             | 6 504                           | 13 007                                | 1 595                       | 2 930                        | 951                              | 20 125                               |
| November         | 6 389                             | 8 821                           | 17 589                                | 1 090                       | 2 899                        | 2 010                            | 19 535                               |
| December         | 6 168                             | 6 903                           | 23 199                                | 1 317                       | 6 032                        | 1 905                            | 10 875                               |
| <b>2002</b>      |                                   |                                 |                                       |                             |                              |                                  |                                      |
| January          | 6 423                             | 8 033                           | 15 492                                | 1 646                       | 1 896                        | 1 203                            | 23 215                               |
| February         | 6 782                             | 11 042                          | 16 258                                | r 4 615                     | 4 077                        | 4 394                            | 6 258                                |
| March            | 6 718                             | 10 240                          | 12 725                                | r 10 134                    | 4 133                        | 6 619                            | r 17 626                             |
| April            | 4 266                             | 10 089                          | 12 805                                | r 16 459                    | 3 599                        | 1 030                            | r 14 446                             |
| May              | 4 911                             | 9 839                           | 8 402                                 | r 10 700                    | 6 604                        | 633                              | 20 622                               |
| June             | 6 153                             | 15 304                          | 6 840                                 | r 5 944                     | 3 698                        | 1 972                            | 17 261                               |
| July             | 4 954                             | r 5 878                         | 14 262                                | r 4 324                     | 5 441                        | 2 081                            | 18 610                               |
| August           | 6 543                             | 6 449                           | 16 903                                | r 3 001                     | 3 116                        | 2 854                            | 16 325                               |
| September        | r 4 246                           | r 7 258                         | 14 704                                | r 2 423                     | r 4 442                      | r 988                            | r 10 590                             |
| October          | 4 394                             | 4 248                           | 10 250                                | 1 005                       | 3 210                        | 2 543                            | 5 758                                |

|                  | <i>Paper and paperboard</i> | <i>Iron and steel</i> | <i>Non-ferrous metals</i> | <i>Road vehicles and transport equipment</i> | <i>Other and combined confidential items(b)</i> | <i>Total all commodity groups</i> |
|------------------|-----------------------------|-----------------------|---------------------------|--|---|-----------------------------------|
|                  | \$'000                      | \$'000                | \$'000                    | \$'000                                       | \$'000  | \$'000                            |
| <b>1999–2000</b> | 9 932                       | 10 216                | 681 903                   | 213 836                                      | 387 310   | 2 214 523                         |
| <b>2000–01</b>   | 3 444                       | 4 209                 | 793 286                   | 107 374                                      | 815 368   | 2 435 416                         |
| <b>2001–02</b>   | 14 208                      | 2 894                 | r 762 015                 | 106 183                                      | r 820 780                                       | r 2 387 685                       |
| <b>2001</b>      |                             |                       |                           |  |   |                                   |
| October          | 784                         | 227                   | 59 151                    | 1 882  | 88 091  | 202 475                           |
| November         | 159                         | 451                   | 52 170                    | 354  | 73 447  | 184 916                           |
| December         | 1 823                       | 203                   | 48 803                    | 479  | 82 421  | 190 126                           |
| <b>2002</b>      |                             |                       |                           |  |   |                                   |
| January          | 2 188                       | 255                   | 65 375                    | 659  | 51 315  | 177 700                           |
| February         | 2 076                       | 67                    | r 33 266                  | 304  | 58 286  | r 147 424                         |
| March            | 3 195                       | 106                   | 87 136                    | 19 692                                       | r 75 867  | r 258 192                         |
| April            | 1 434                       | 162                   | r 69 596                  | 79 582                                       | 64 634  | r 278 101                         |
| May              | 702                         | 88                    | 60 215                    | 320  | 73 098  | r 196 135                         |
| June             | 1 149                       | 245                   | 69 919                    | 603  | r 66 484  | r 195 572                         |
| July             | 1 105                       | 147                   | r 64 629                  | 280  | 71 160  | r 192 872                         |
| August           | 1 246                       | 230                   | r 83 106                  | 26   | r 85 523  | r 225 323                         |
| September        | r 1 355                     | r 258                 | r 64 723                  | 21   | r 74 208  | r 185 219                         |
| October          | 898                         | 170                   | 56 836                    | 2 743  | 84 140  | 176 195                           |

(a) Hardwood woodchips exports are confidential for Tasmania from June 2000.

(b) Includes medical & pharmaceutical products from January 2002.

Source: ABS data available on request, International Trade.

|   | NSW      | Vic.    | Qld     | SA      | WA      | Tas.          | Aust.(a) |
|---|----------|---------|---------|---------|---------|---------------|----------|
| <b>Population</b>   |          |         |         |         |         |               |          |
| Estimated resident population, June 2002 ('000) p   | 6 663.7  | 4 883.3 | 3 708.7 | 1 522.2 | 1 929.3 | <b>473.6</b>  | 19 707.2 |
| Proportion of Australian population, June 2002 (%) p  | 33.8     | 24.8    | 18.8    | 7.7     | 9.8     | <b>2.4</b>    | 100.0    |
| Population growth rate, 12 months to June 2002 (%) p  | 0.8      | 1.3     | 2.0     | 0.5     | 1.2     | <b>0.1</b>    | 1.1      |
| <b>Labour force</b>   |          |         |         |         |         |               |          |
| Employment growth, November 2001 to November 2002 (trend series) (%)  |          |         |         |         |         |               |          |
| Males   | 1.8      | —       | 3.1     | 2.5     | 1.8     | <b>0.7</b>    | 1.6      |
| Females   | 2.2      | 4.5     | 3.2     | 1.8     | 2.6     | <b>-1.1</b>   | 2.7      |
| Persons   | 1.9      | 1.9     | 3.1     | 2.2     | 2.1     | <b>-0.1</b>   | 2.1      |
| Unemployment rate (trend series), November 2002 (%)   | 5.7      | 5.8     | 6.9     | 6.2     | 6.1     | <b>8.2</b>    | 6.1      |
| Unemployment growth, November 2001 to November 2002 (trend series) (%)  | -8.0     | -11.2   | -12.5   | -11.1   | -6.6    | <b>-8.7</b>   | -10.1    |
| Participation rate (trend series), November 2002 (%)  | 62.6     | 63.5    | 64.9    | 60.6    | 66.4    | <b>57.9</b>   | 63.6     |
| Job vacancy rate, August 2002 (%)   | 1.3      | 1.5     | 1.5     | 1.3     | 1.1     | <b>*1.4</b>   | 1.4      |
| Working days lost through industrial disputes, 12 months to August 2002 (days per '000 employees)   | 32       | 55      | 29      | 19      | 30      | <b>18</b>     | 35       |
| <b>Wages and prices</b>   |          |         |         |         |         |               |          |
| Average weekly full-time adult employees' total earnings (trend series) August 2002(\$)   |          |         |         |         |         |               |          |
| Males   | 1 033.30 | 991.60  | 912.00  | 891.20  | 1003.80 | <b>885.00</b> | 983.90   |
| Females   | 826.50   | 816.00  | 753.00  | 768.20  | 757.10  | <b>761.30</b> | 801.40   |
| Persons   | 956.60   | 930.70  | 854.60  | 850.50  | 921.80  | <b>844.60</b> | 919.00   |
| Average weekly full-time adult employees' total earnings, growth (trend), 12 months to August 2002 (%)  | 3.5      | 9.4     | 4.5     | 2.7     | 5.0     | <b>6.6</b>    | 5.3      |
| Consumer price index, all groups, annual growth to September qtr 2002 (%) (b)   | 3.1      | 3.1     | 3.7     | 3.7     | 3.3     | <b>3.5</b>    | 3.2      |
| <b>Building</b>   |          |         |         |         |         |               |          |
| % change in the number of total dwelling units approved (original), — in the 12 months ended October 2002, over the same period previous year | 24.8     | 15.5    | 35.8    | 38.1    | 19.5    | <b>49.2</b>   | 24.5     |
| — October 2001 to October 2002  | 11.2     | 0.2     | 69.7    | 24.4    | 1.5     | <b>1.8</b>    | 17.2     |

For footnotes see end of table.

...continued

|  | NSW  | Vic. | Qld   | SA   | WA   | Tas.         | Aust.(a) |
|--|------|------|-------|------|------|--------------|----------|
| <b>Private investment and retail trade</b>   |      |      |       |      |      |              |          |
| % change in private new capital expenditure, 12 months ended September 2002 over the same period previous year (original)            | -5.6 | 10.2 | 21.1  | 18.8 | 2.2  | <b>51.8</b>  | 7.7      |
| % change in trend estimates turnover of retail establishments, October 2002 (change from corresponding month of the previous year)   | 7.3  | 4.0  | 9.0   | 7.9  | 6.5  | <b>6.3</b>   | 6.7      |
| <b>Transport</b>   |      |      |       |      |      |              |          |
| % change in number of sales of new motor vehicles in the 12 months ended October 2002 over the same period previous year, (trend)(c) | 5.0  | 5.1  | 13.1  | 9.1  | 6.2  | <b>6.3</b>   | 6.7      |
| <b>Agriculture</b>   |      |      |       |      |      |              |          |
| % change in the number of livestock slaughtered 12 months ended October 2002 over the same period previous year (original)           |      |      |       |      |      |              |          |
| Cattle and calves  | 6.6  | 34.5 | -1.2  | 21.2 | 57.6 | <b>13.3</b>  | 12.6     |
| Sheep and lambs  | 4.6  | 3.3  | -33.8 | 5.7  | -5.9 | <b>-14.5</b> | —        |
| <b>Tourism — room occupancy rates</b>  |      |      |       |      |      |              |          |
| Hotels, motels & guest houses, & serviced apartments with facilities, June quarter 2002 (%)  | 55.5 | 53.7 | 56.2  | 54.3 | 50.5 | <b>47.5</b>  | 54.8     |
| <b>Australian National and State Accounts</b>  |      |      |       |      |      |              |          |
| % change in Domestic (State) Final Demand(d), Chain Volume measures (trend series)   |      |      |       |      |      |              |          |
| Jun qtr 2002 to Sep qtr 2002   | 0.8  | 1.2  | 2.1   | 1.3  | 1.0  | <b>0.8</b>   | 1.2      |
| Sep qtr 2001 to Sep qtr 2002   | 4.7  | 6.2  | 8.8   | 7.8  | 3.9  | <b>5.8</b>   | 6.1      |

(a) Australian totals include the ACT and NT, with the exception of Agriculture, which excludes both.

(b) CPI applies to state capitals.

(c) This data is new and replaces the Registration of New Motor Vehicles data. The Australian Bureau of Statistics is no longer collecting and disseminating statistics relating to the registration of new motor vehicles. For more information please refer to the paper Developments in New Motor Vehicle Statistics, 2001 (cat. no. 9313.0)

(d) Total of four types of expenditure: Private investment, Private consumption, Government investment, Government consumption.



|   | <i>Unit</i>     | <i>Greater Hobart<br/>and Southern<br/>Statistical<br/>Divisions</i> | <i>Northern<br/>Statistical<br/>Division</i> | <i>Mersey-Lyell<br/>Statistical<br/>Division</i> | <i>Tasmania</i> |
|---|-----------------|--|--|--|-----------------|
| <b>Area(a)</b>  | km <sup>2</sup> | 25 616   | 19 980                                       | 22 523   | 68 121          |
| <b>Population</b>   |                 |  |  |  |                 |
| Estimated resident population, 30 June 1996                 | no.             | 230 187  | 134 047                                      | 110 209  | 474 443         |
| Estimated resident population, 30 June 2001                 | no.             | 232 480  | 133 424                                      | 107 027  | 472 931         |
| Births 2001(b)  | no.             | 3 199  | 1 815  | 1 397  | 6 430           |
| Deaths 2001(b)  | no.             | 1 827  | 1 148  | 884  | 3 876           |
| <b>Labour force (original), October 2002</b>                |                 |  |  |  |                 |
| Total employed  | no.             | 95 100   | 58 700                                       | 43 800   | 197 600         |
| Total unemployed  | no.             | 7 800  | 4 700  | 5 100  | 17 600          |
| Unemployment rate   | %               | 7.6  | 7.4  | 10.5   | 8.2             |
| Participation rate  | %               | 57.1   | 58.0   | 57.4   | 57.4            |
| <b>Schools, 2000(c)</b>                                     |                 |  |  |  |                 |
| Government  | no.             | 99   | 58   | 58   | 215             |
| Non-government  | no.             | 34   | 17   | 16   | 67              |
| <b>Full-time equivalent School students, 2000(c)</b>        |                 |  |  |  |                 |
| Government  |                 |  |  |  |                 |
| Males   | no.             | 15 415.8   | 9395.0                                       | 7 805.3  | 32 616.1        |
| Females   | no.             | 14 865.6   | 9 492.4                                      | 7 597.5  | 31 955.5        |
| Total   | no.             | 30 281.4   | 18 887.4                                     | 15 402.8   | 64 571.6        |
| Non-government  |                 |  |  |  |                 |
| Males   | no.             | 5 825.2  | 2 479.1                                      | 2 022.2  | 10 326.5        |
| Females   | no.             | 6 132.9  | 2 423.5                                      | 1 919.2  | 10 475.6        |
| Total   | no.             | 11 958.1   | 4 902.6                                      | 3 941.4  | 20 802.1        |
| <b>Educational qualification, 2001 Census(d)</b>            |                 |  |  |  |                 |
| Postgraduate degree level                                   | no.             | 3 016  | 940  | 386  | 4 342           |
| Graduate diploma and Graduate certificate level             | no.             | 2 374  | 850  | 525  | 3 749           |
| Batchelor degree level                                      | no.             | 16 171   | 7 052  | 3 821  | 27 044          |
| Advanced diploma and diploma level                          | no.             | 9 613  | 4 785  | 3 429  | 17 827          |
| Certificate level   | no.             | 25 715   | 15 463                                       | 12 953   | 54 131          |
| <b>Agriculture</b>  |                 |  |  |  |                 |
| Establishments with agricultural activity, 2000–2001 season | no.             | 1 126  | 1 534  | 1 626  | 4 286           |
| Total area of establishments                                | ha.             | 742 247  | 840 809                                      | 323 703  | 1 906 759       |
| Crops, production, 2000–2001 season                         |                 |  |  |  |                 |
| Potatoes  | tonnes          | 8 820  | 116 029                                      | 206 170  | 331 019         |
| Onions  | tonnes          | 1  | 13 365                                       | 28 849   | 42 215          |
| Apples  | tonnes          | 42 269   | 4 043  | 9 793  | 56 105          |
| Barley  | tonnes          | 8 048  | 16 402                                       | 1 542  | 25 992          |
| Livestock, 2000–2001 season                                 |                 |  |  |  |                 |
| Meat cattle   | no.             | 56 819   | 169 986                                      | 199 655  | 426 460         |
| Milk cattle   | no.             | 6 682  | 79 391                                       | 123 727  | 209 800         |
| Sheep and lambs   | no.             | 1 363 695  | 1 731 700                                    | 188 853  | 3 284 248       |
| Pigs  | no.             | 1 573  | 16 190                                       | 4 339  | 22 103          |
| Gross value of agricultural production, 2000–2001           | \$m             | n.y.a.   | n.y.a.                                       | n.y.a.   | 755             |

For footnotes see end of table.

...continued

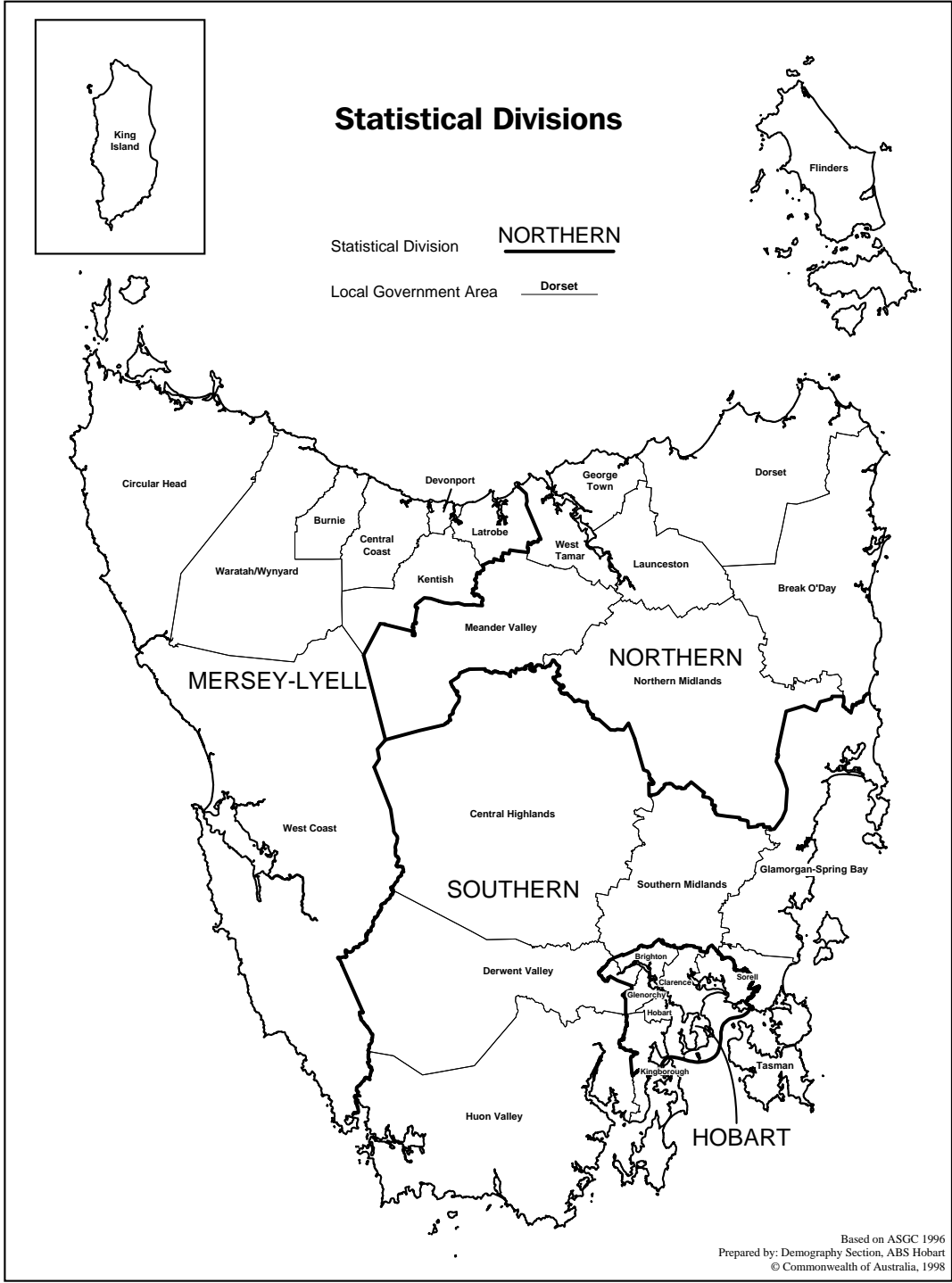
|  | <i>Unit</i> | <i>Greater Hobart<br/>and Southern<br/>Statistical<br/>Divisions</i> | <i>Northern<br/>Statistical<br/>Division</i> | <i>Mersey-Lyell<br/>Statistical<br/>Division</i> | <i>Tasmania</i> |
|--|-------------|--|--|--|-----------------|
| <b>Building, 2001-02</b>                     |             |  |  |  |                 |
| Total dwelling units approved                | no.         | r 1 098  | 637  | r 297  | r 2 032         |
| Value of total residential building approved | \$'000      | r 150 941  | 79 427                                       | r 42 359   | r 272 727       |
| Value of total building approved             | \$'000      | r 242 609  | 121 721                                      | r 76 380   | r 440 710       |
| <b>Dwellings, Census 2001</b>                |             |  |  |  |                 |
| Total dwellings                              | no.         | 102 374  | 59 307                                       | 46 364   | 208 046         |
| Occupied private dwellings                   | no.         | 89 156   | 51 249                                       | 40 766   | 181 172         |
| Fully owned                                  | no.         | 35 777   | 21 570                                       | 17 984   | 75 331          |

(a) Source: Department of Primary Industries, Water and Environment.

(b) Births and deaths are based on usual residence year of registration. Total Tasmania includes usual residence other than Tasmanian Statistical Divisions.

(c) Source: DETYA and Tasmanian Department of Education.

(d) From 2001 the *Australian Standard Classification of Education (ASCED)* (cat. no. 1272.0) replaced the *ABS Classification of Qualifications (ABSCQ)* (cat. no. 1262.0). For further information see ASCED.



## FOR MORE INFORMATION...

- INTERNET* **www.abs.gov.au** the ABS web site is the best place to start for access to summary data from our latest publications, information about the ABS, advice about upcoming releases, our catalogue, and Australia Now—a statistical profile.
- LIBRARY* A range of ABS publications is available from public and tertiary libraries Australia-wide. Contact your nearest library to determine whether it has the ABS statistics you require, or visit our web site for a list of libraries.
- CPI INFOLINE* For current and historical Consumer Price Index data, call 1902 981 074 (call cost 77c per minute).
- DIAL-A-STATISTIC* For the latest figures for National Accounts, Balance of Payments, Labour Force, Average Weekly Earnings, Estimated Resident Population and the Consumer Price Index call 1900 986 400 (call cost 77c per minute).

**INFORMATION SERVICE**

Data which have been published and can be provided within five minutes are free of charge. Our information consultants can also help you to access the full range of ABS information—ABS user-pays services can be tailored to your needs, time frame and budget. Publications may be purchased. Specialists are on hand to help you with analytical or methodological advice.

- PHONE* **1300 135 070**
- EMAIL* **client.services@abs.gov.au**
- FAX* 1300 135 211
- POST* Client Services, ABS, GPO Box 796, Sydney 2001

## WHY NOT SUBSCRIBE?

ABS subscription services provide regular, convenient and prompt deliveries of ABS publications and products as they are released. Email delivery of monthly and quarterly publications is available.

- PHONE* 1300 366 323
- EMAIL* subscriptions@abs.gov.au
- FAX* 03 9615 7848
- POST* Subscription Services, ABS, GPO Box 2796Y, Melbourne 3001



2130360001039  
ISSN 1034-1803

RRP \$22.00